



National Alliance
for Hispanic Health

ABOUT THE ALLIANCE

ACHIEVING THE BEST HEALTH OUTCOMES FOR ALL

National Alliance for Hispanic Health

Our Mission

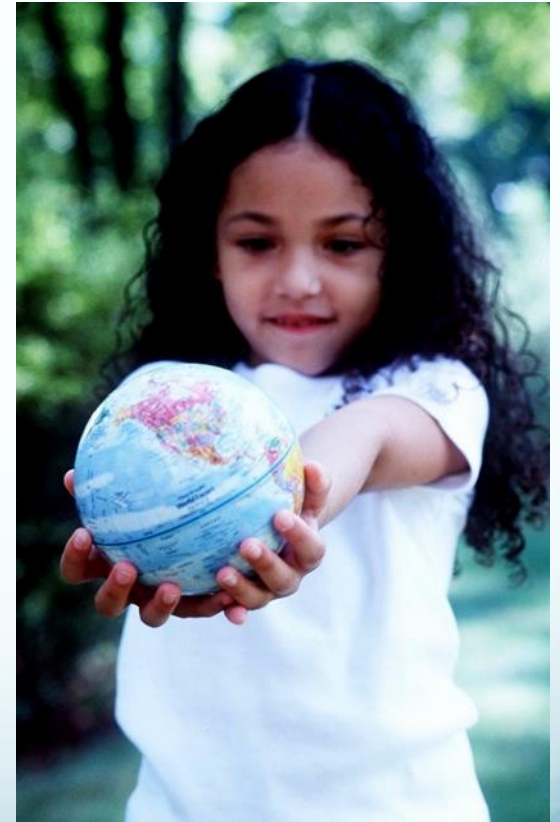
Best Health Outcomes for All

We work to insure that health incorporates the best of science, culture, and community.

Our Goal

To close the gaps between:

- Research, services, and policy;
- Scientific discovery and benefit for individual; and
- Community services and medical practice.

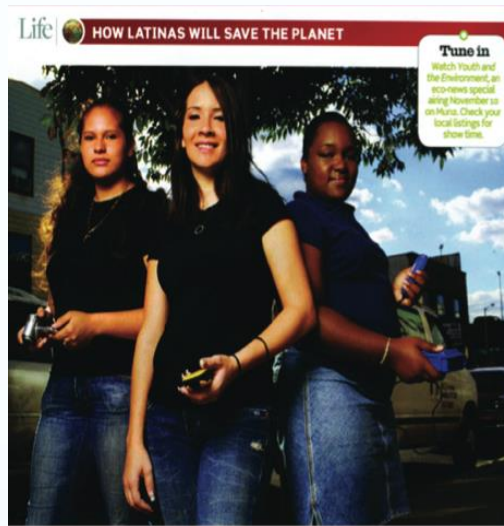


The Alliance

- Largest and oldest Hispanic network, the nation's experts in Hispanic health.
- Executive, bi-partisan Board of Directors
- Community-based Alliance organization members deliver services to 15 million persons each year; national organization members 100 million.
- Believe in community-based solutions.
- Do not accept funding from alcohol, tobacco, or sugar sweetened beverage companies.



text
“INSPIRE”
to 805722



text
“INNOVATE”
to 805722



text
“ENGAGE”
to 805722



Key Resources

- ***Su Familia* National Hispanic Family Health Helpline**
 - **1-866-783-2645 (1-866-SU-FAMILIA)**
- **www.hispanichealth.org**
- **www.healthyamericasinstitute.org**



Nuestras Voces... Our Voices

National Hispanic Network to Reduce Tobacco-Related and Cancer Health Disparities

HOME

ABOUT

NETWORK

SUPPORT

RESOURCES

JOIN

NEWS

CONTACT

LEARN MORE

www.nuestrasvoces.org

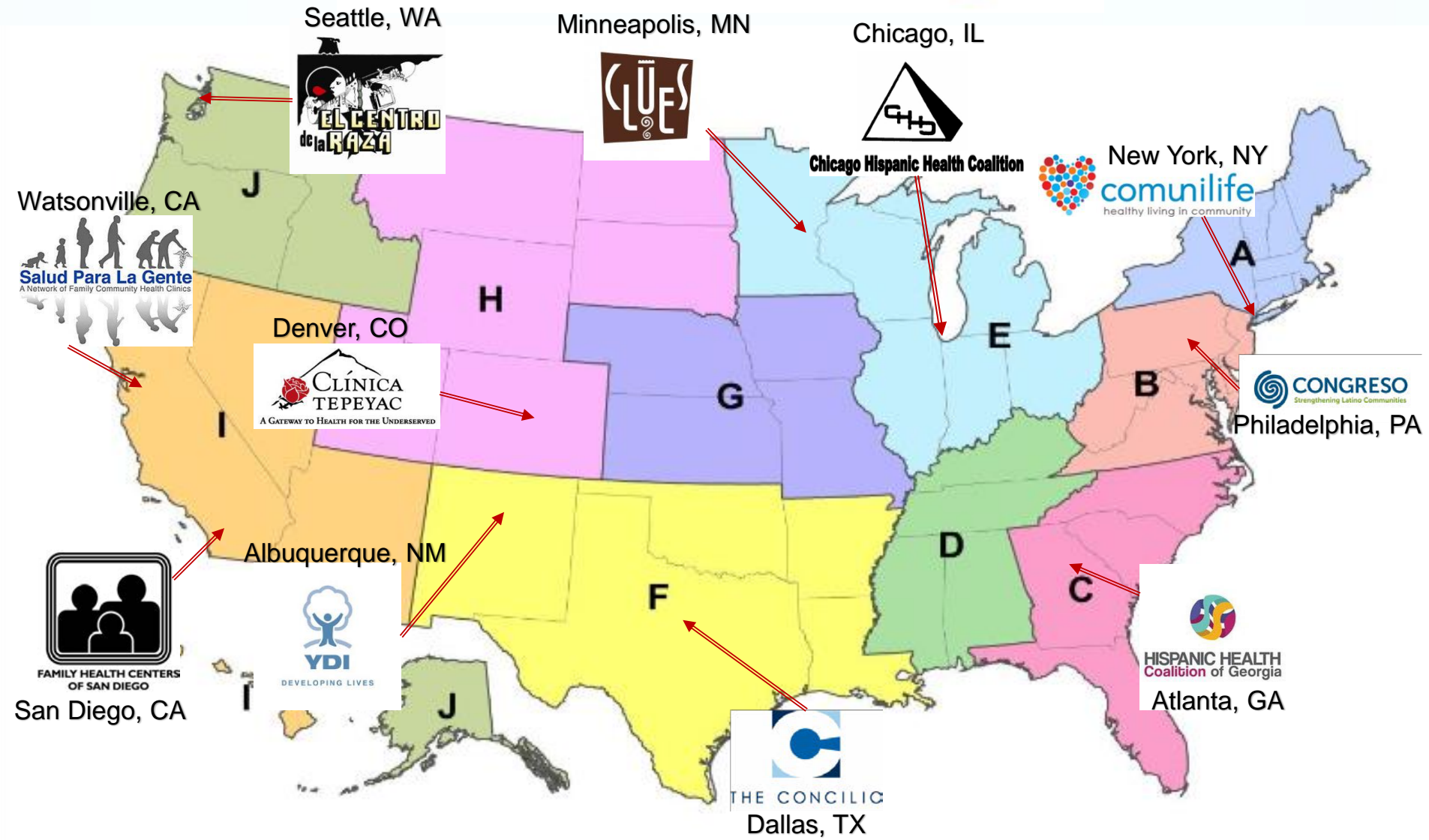


Network Overview

Nuestras Voces works to build Hispanic community infrastructure, as well as increase partnerships with regional and national tobacco and cancer control networks and other stakeholders, to:

- Decrease exposure to second-hand tobacco smoke,
- Increase smoking cessation,
- Increase cancer prevention, and;
- Improve quality of life for those living with cancer.

Nuestras Voces Subnetwork Lead Agencies



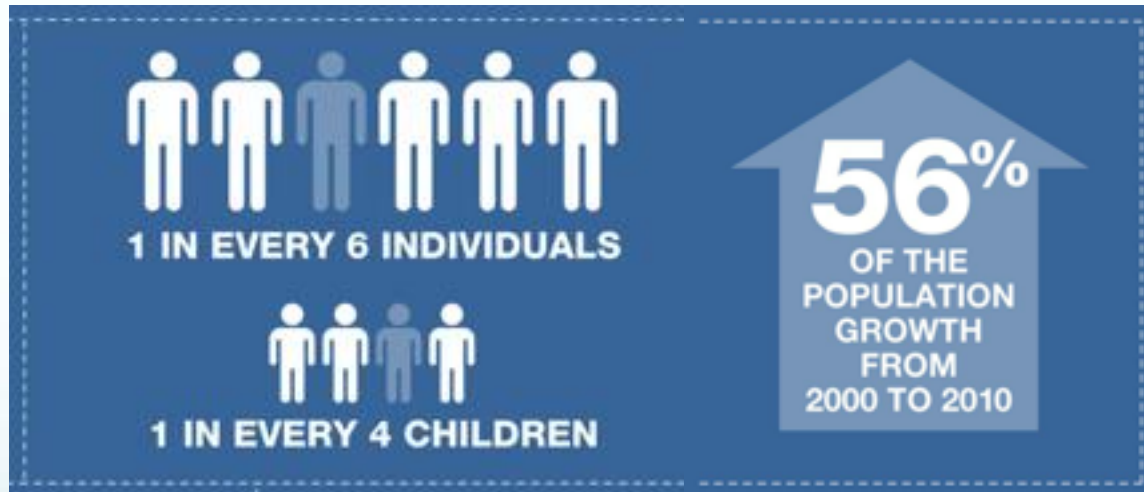


Key Challenges Ahead

- **Tobacco tipping point.**
 - Hispanic 8th graders are now more likely to smoke. Among adult smokers, cessation counseling continues to lag.
- **Cancer diagnosis and treatment lag.**
 - Hispanic communities most uninsured, receive prevention and treatment later, and not in clinical trials.
- **Evidence-based barrier.**
 - Few culturally proficient evidence-based interventions for underserved Hispanic communities.
- **Cervical cancer disparity.**
 - Incidence rates remain highest for Hispanic women than any other group.

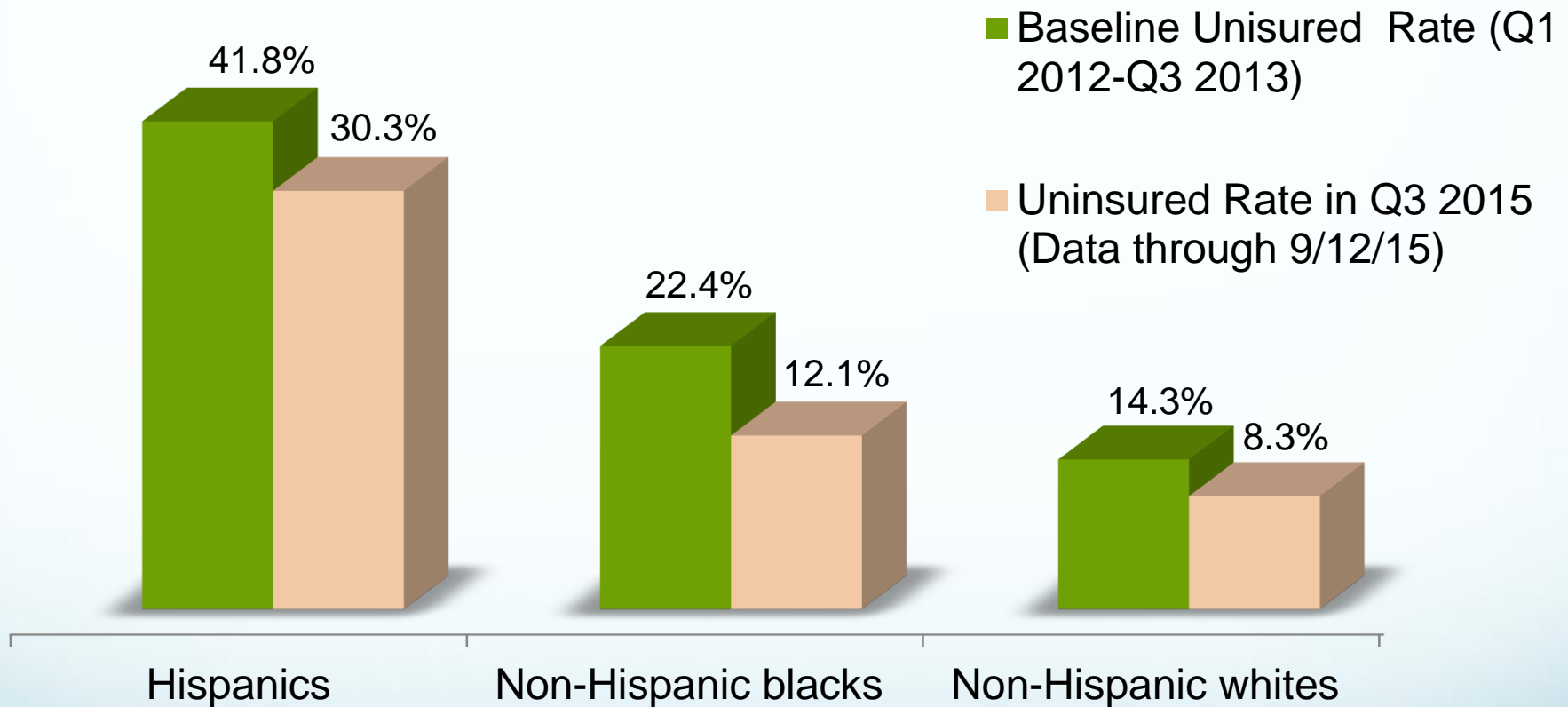
Hispanic Population in the U.S.

58.9 Million Hispanics
(55.4 mainland U.S. and 3.5 million
Commonwealth of Puerto Rico).



Source: U.S. Census Bureau, Population Division. Annual Estimates of the Resident Population by Sex, Age, Race, and Hispanic Origin for the United States, States, and Counties: April 1, 2010 to July 1, 2015. Release Date: June 2015.
For Puerto Rico: Table 1. Annual Estimates of the Resident Population for the United States, Regions, States, and Puerto Rico: April 1, 2010 to July 1, 2015 (NST-EST2015-0). Release Date: December 2015.

Percent of Population Uninsured after Implementation of ACA

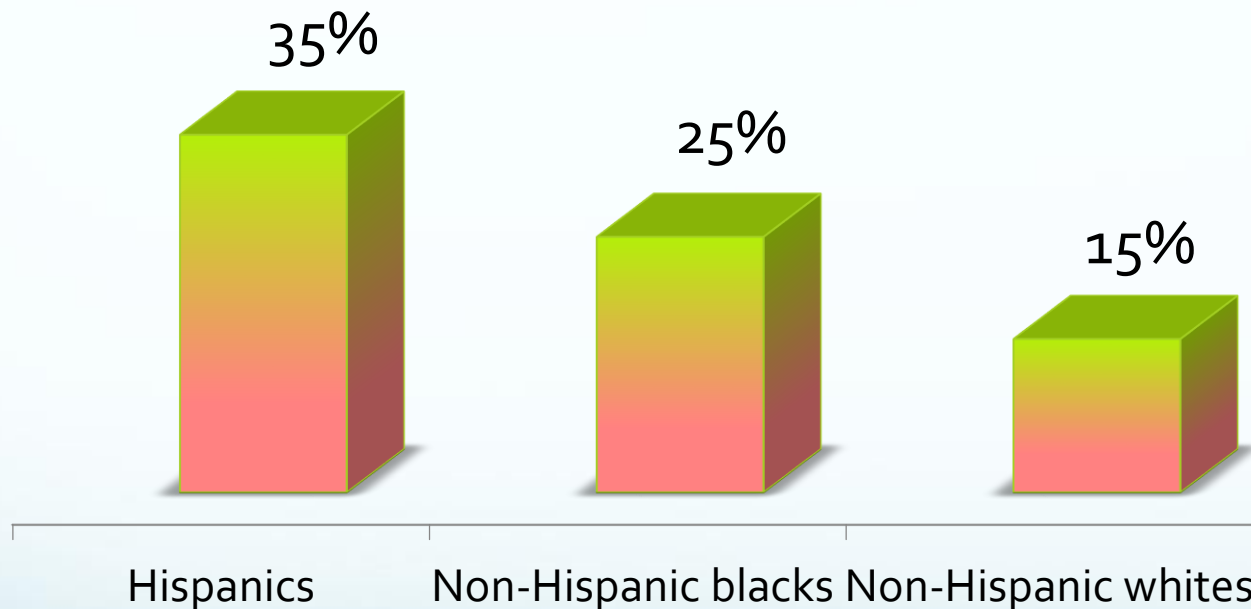


Source: Office of the Assistant Secretary for Planning and Evaluation (ASPE). Health Insurance Coverage and the Affordable Care Act. September 22, 2015.

Note: Data from base line period (Q1 2012 and Q3 2013) until the third quarter in 2015 of ACA implementation.

Access to Health Care

Percent of persons with a regular source of care responding that they go to a “community health center” when they are sick



Cancer Incidence Rates by Race/Ethnicity and Gender, 2008-2012

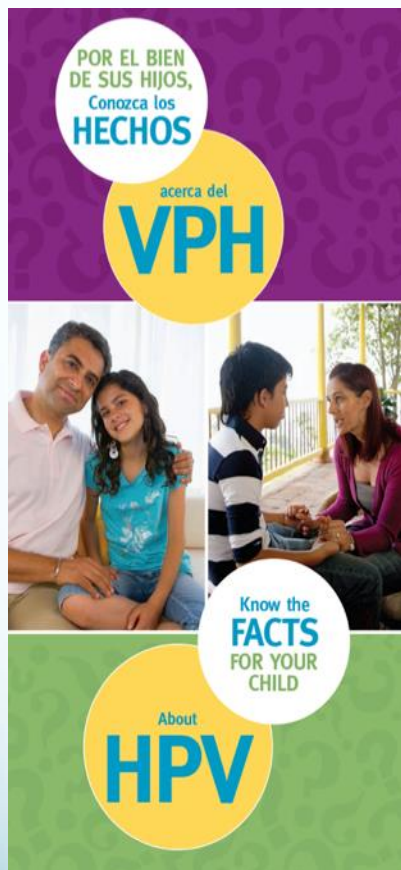
	Male	Female
Non-Hispanic White	528.9	436.2
Hispanic	408.5	330.4
Non-Hispanic Black	592.3	408.1
Asian/Pacific Islander	316.8	287.5
American Indian/Alaska Native	423.3	372.9

Source: American Cancer Society. Cancer Statistics Center.

<http://cancerstatisticscenter.cancer.org>.
Accessed 2/11/2016.

Notes: Rates are per 100,000 persons and age-adjusted to the 2000 U.S. standard population.

Incidence Rates of Some Types of Cancer by Race/Ethnicity and Gender, 2008-2012



Cancer Site	Non-Hispanic White	Hispanic	Non-Hispanic Black	Asian/Pacific Islander	American Indian/Alaska Native
Males					
Stomach	7.8	13.5	15.1	14.5	12.0
Liver/Intrahepatic bile duct	9.3	19.3	16.5	20.6	18.7
Females					
Stomach	3.5	7.8	8.0	8.5	6.6
Liver/Intrahepatic bile duct	3.2	7.2	4.8	7.9	8.9
Cervix	7.1	10.2	10.0	6.3	9.4

Source: American Cancer Society. Cancer Statistics Center. <http://cancerstatisticscenter.cancer.org>. Accessed 2/11/2016.
 Notes: Rates are per 100,000 persons and age-adjusted to the 2000 U.S. standard population.

HPV Vaccination* Coverage Estimates of Adolescents Aged 13-17 Years by Race/Ethnicity & Gender, National Immunization Survey of Teens in the United States, 2014

	Female	Male
White Non-Hispanic	70.6%	57.9%
Hispanic	72.8%	57.2%
Black Non-Hispanic	61.6%	54.1%
Asian	71.7%	63.0%
American Indian/Alaska Native	55.4%	57.7%

* Three dose series completion

Source: Centers for Disease Control and Prevention, National Center for Immunizations and Respiratory Diseases, Updated October 2015.

Notes: National estimate does not include adolescents living in Puerto Rico.

PAP Smear Utilization Among Women Aged 18 and Over By Race/Ethnicity: United States, 2013

	Percent of women having a Pap smear within the past 3 years
White Non-Hispanic	68.4%
Hispanic	70.5%
Black Non-Hispanic	75.1%
Asian	70.1%
American Indian/Alaska Native	65.3%

Source: National Center for Health Statistics. Health, United States, 2014: With Special Feature on Adults Aged 55–64. Hyattsville, MD. 2015.

Notes: National estimate does not include adolescents living in Puerto Rico.



Nuestras Voces... Our Voices

National Hispanic Network to Reduce Tobacco-Related and Cancer Health Disparities

***Culturally Proficient Strategies to Improve
Cervical Cancer Screening Among
Hispanics***