

Cyrus Shahabi

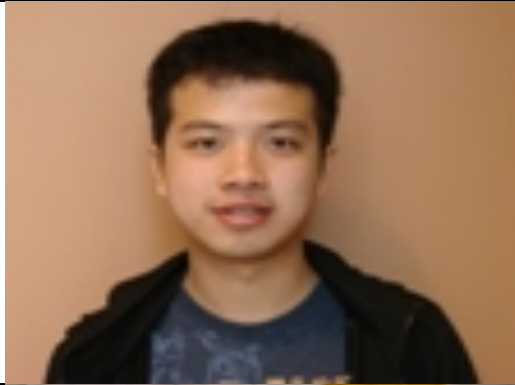


Cyrus Shahabi is currently an Associate Professor and the Director of the Information Laboratory (InfoLAB) at the Computer Science Department and also a Research Area Director at the NSF's Integrated Media Systems Center (IMSC) at the University of Southern California. He received his Ph.D. degree in Computer Science from the University of Southern California in August 1996. He has two books and more than hundred articles, book chapters, and conference papers in the areas of databases and multimedia. Dr. Shahabi's current research interests include Peer-to-Peer Systems, Streaming Architectures, Geospatial Data Integration and Multidimensional Data Analysis. He was the program committee chair of ACM WIDM'99 workshop and the local chair of ACM SIGMETRICS'2002. He is currently on the editorial board of ACM Computers in Entertainment magazine and program committee chair of ICDE NetDB 2005. He is also serving on many conference program committees such as ACM GIS 2004, ACM CIKM 2004, IEEE ICDE 2004 and ACM SIGMOD 2004. Dr. Shahabi is the recipient of the 2002 National Science Foundation CAREER Award and 2003 Presidential Early Career Awards for Scientists and Engineers (PECASE). In 2001, he also received an award from the Okawa Foundations.

Research Associates and Students:



Houtan Shirani-Mehr



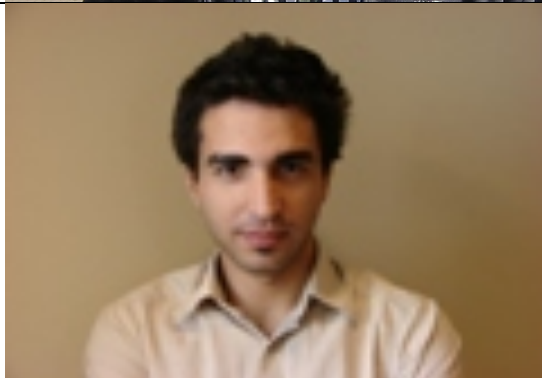
Grady Laksmono



Ugur Demiryurek



Afsin Akdogan



Ali Khodaei



Jalal Katzemitabar



Farnoush Banaei-Kashani