

**TOTAL NUMBER OF INTERNATIONAL\* STUDENTS**

	<u>1999</u>	<u>1998</u>	<u>% Change</u>
<b>Undergraduate</b>	1074	1166	-7.89%
<b>Graduate</b>	3166	2915	8.61%
<b>Other **</b>	324	197	64.47%
<b>TOTAL</b>	<b>4564</b>	<b>4278</b>	<b>6.69%</b>

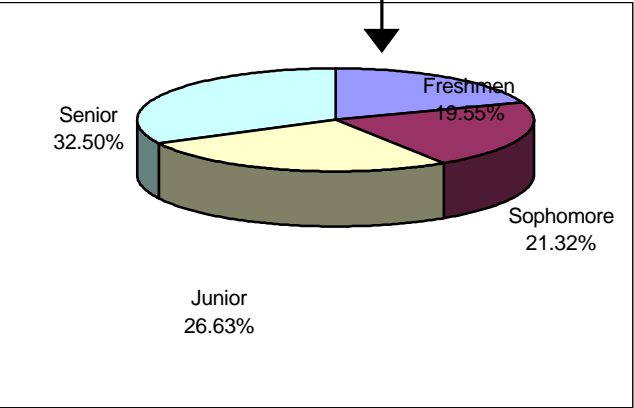
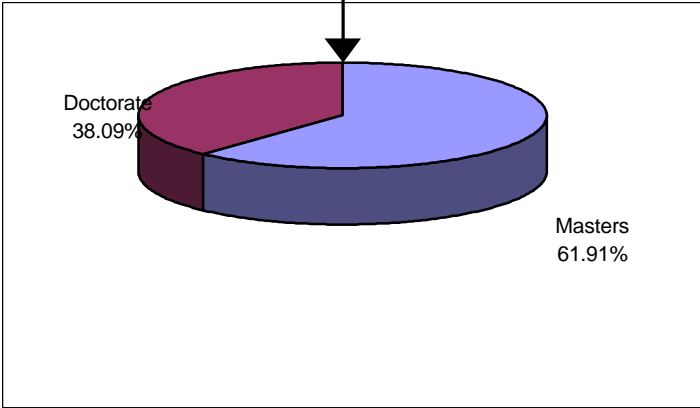
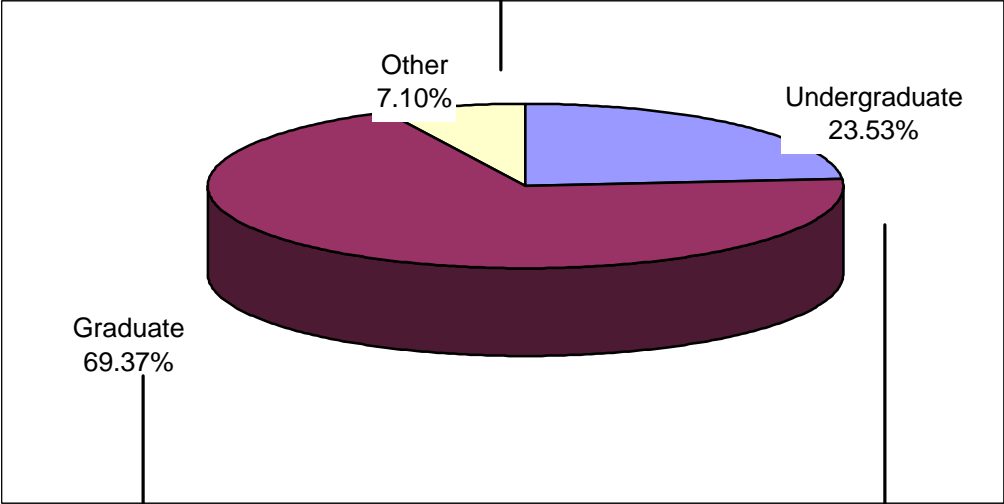
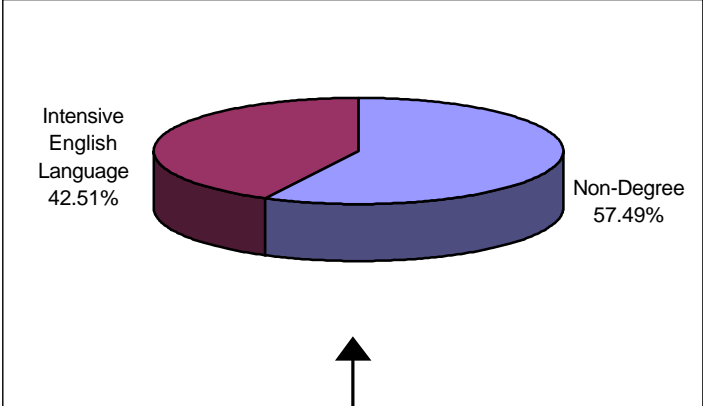
**INTERNATIONAL STUDENTS BY ACADEMIC LEVEL**

	<u>1999</u>	<u>1998</u>	<u>% Change</u>
<b>Freshmen</b>	210	177	18.64%
<b>Sophomore</b>	229	252	-9.13%
<b>Junior</b>	286	333	-14.11%
<b>Senior</b>	349	404	-13.61%
<b>Masters</b>	1960	1730	13.29%
<b>Doctorate</b>	1206	1185	1.77%
<b>Other**</b>	324	197	64.47%

\* International Students are non-US citizen students who hold non-immigrant visas. Citizens of other countries who are US permanent residents (green card holders) are not included, see p.8.

\*\* "Other" includes undergraduate and graduate visitors, non-degree program students, USC Language Academy students and those whose degree status is unknown.

**CLASS DISTRIBUTION OF INTERNATIONAL STUDENTS, FALL 1999**



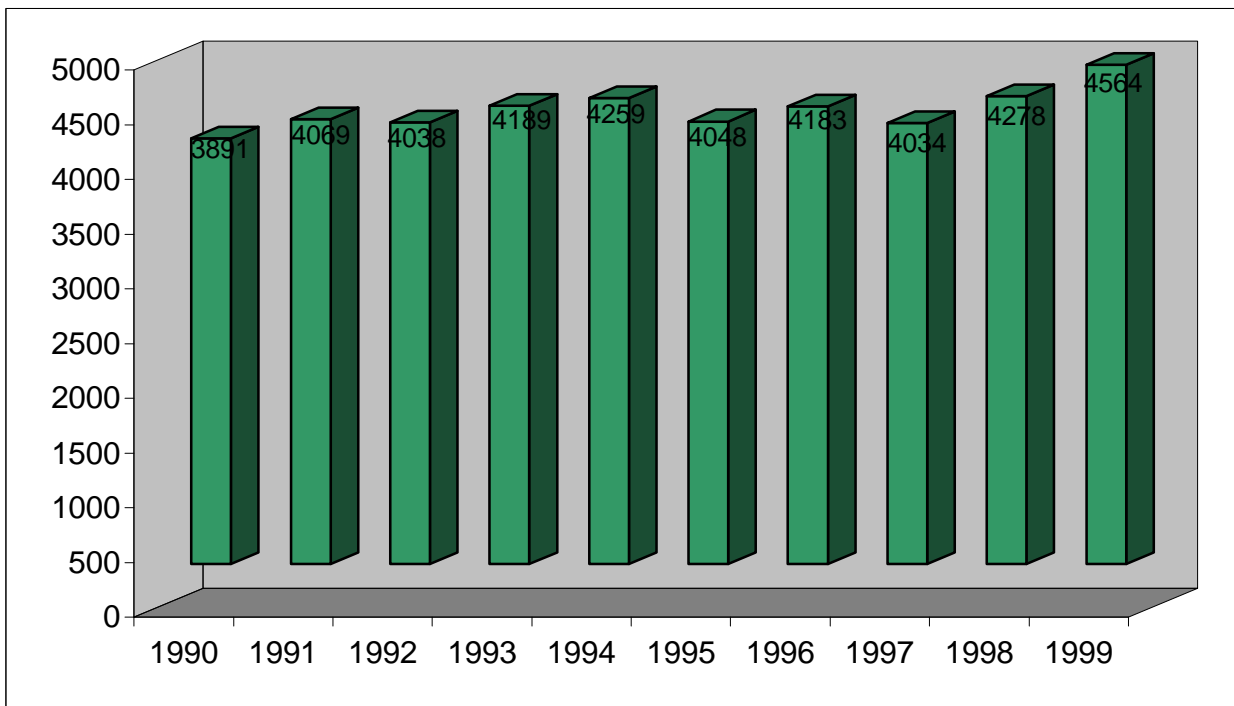
**INTERNATIONAL STUDENTS\* AS A PERCENTAGE OF TOTAL UNIVERSITY ENROLLMENT - FALL 1999**

	<u>International</u>	<u>Total USC</u>	<u>Int'l %</u>
<b>Undergraduate</b>	1074	15919	6.75%
<b>Graduate</b>	3166	11735	26.98%
<b>Other **</b>	324	1252	25.88%
<b>TOTAL</b>	<b>4564</b>	<b>28906</b>	<b>15.79%</b>

\* Foreign citizens holding non-immigrant visas

\*\* "Other" includes undergraduate and graduate visitors, non-degree program students, USC Language Academy students and those whose degree status is unknown.

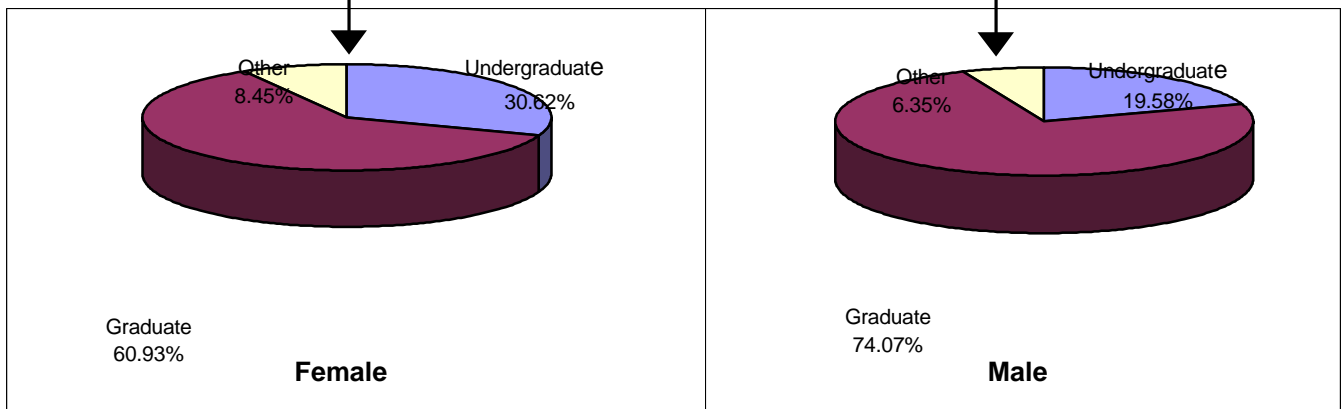
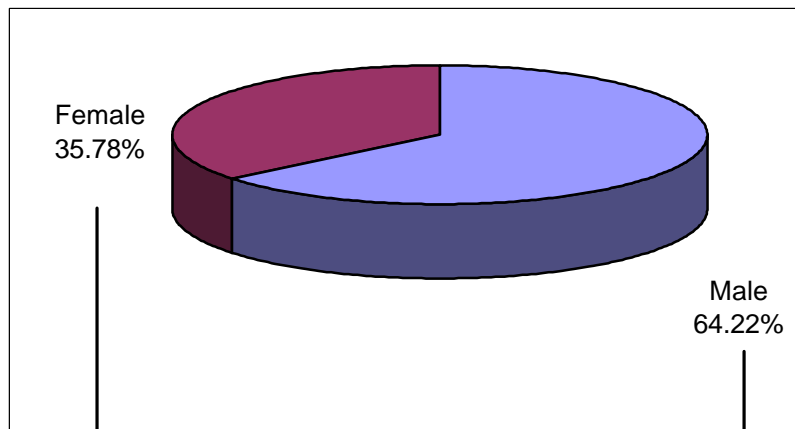
**TEN YEARS OF INTERNATIONAL STUDENT ENROLLMENT 1990 - 1999**



**GENDER CLASSIFICATION COMPARISON  
FALL 1999 AND FALL 1998**

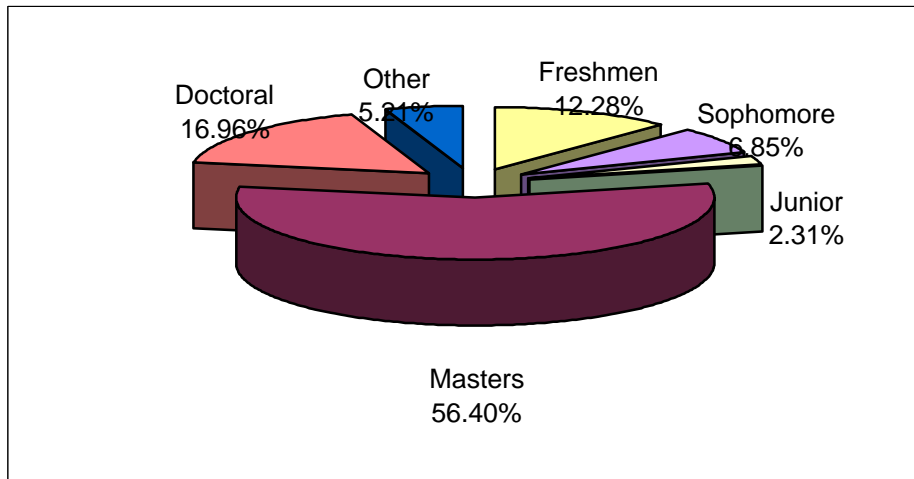
<b>Fall 1999</b>	<b>Male</b>	<b>% of Total</b>	<b>Female</b>	<b>% of Total</b>
Undergraduate	574	53.45%	500	46.55%
Graduate	2171	68.57%	995	31.43%
Other	186	57.41%	138	42.59%
<b>Total Fall 1999</b>	<b>2931</b>	<b>64.22%</b>	<b>1633</b>	<b>35.78%</b>
<b>Total Fall 1998</b>	<b>2746</b>	<b>64.19%</b>	<b>1532</b>	<b>35.81%</b>

**Gender Distribution of International Students  
Fall 1999**



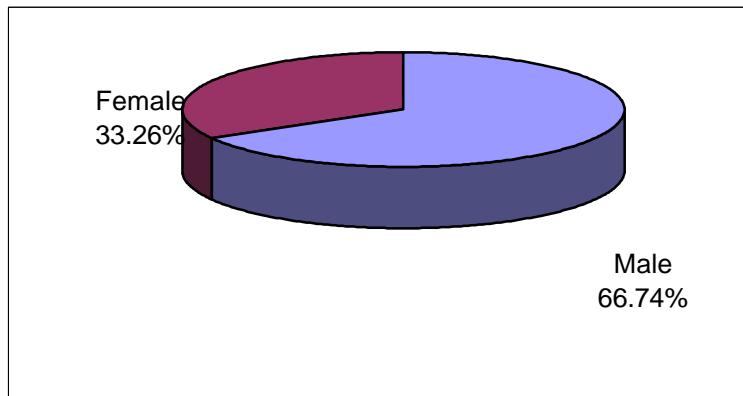
**NEW INTERNATIONAL STUDENT ENROLLMENT**  
**FALL 1999**

<b><u>Academic Level</u></b>	<b><u>1999</u></b>	<b><u>1998</u></b>
Freshmen	165	121
Sophomore	92	113
Junior	31	36
Senior	0	0
Masters	758	721
Doctoral	228	212
Other	70	49
<b>Total</b>	<b>1344</b>	<b>1252</b>



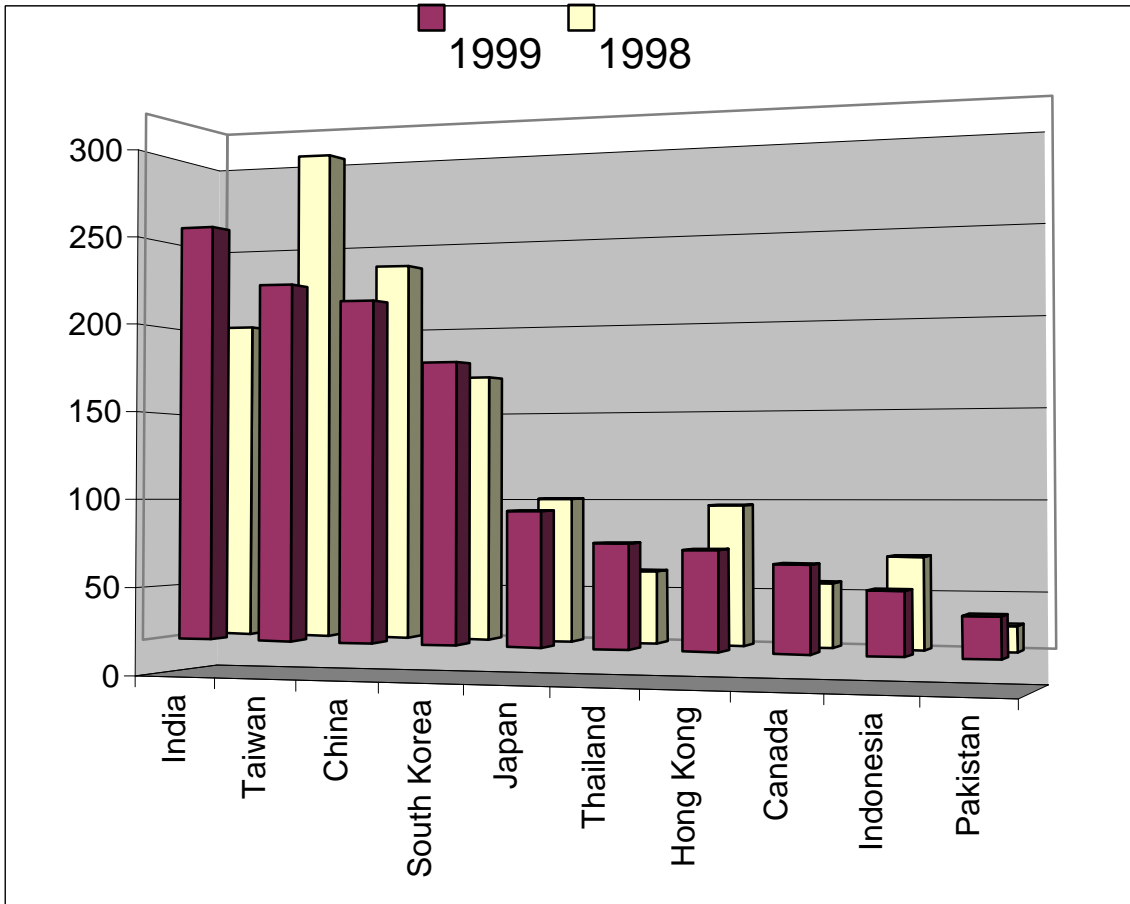
**GENDER DISTRIBUTION OF NEW INTERNATIONAL STUDENTS**  
**FALL 1999**

Male	897
Female	447



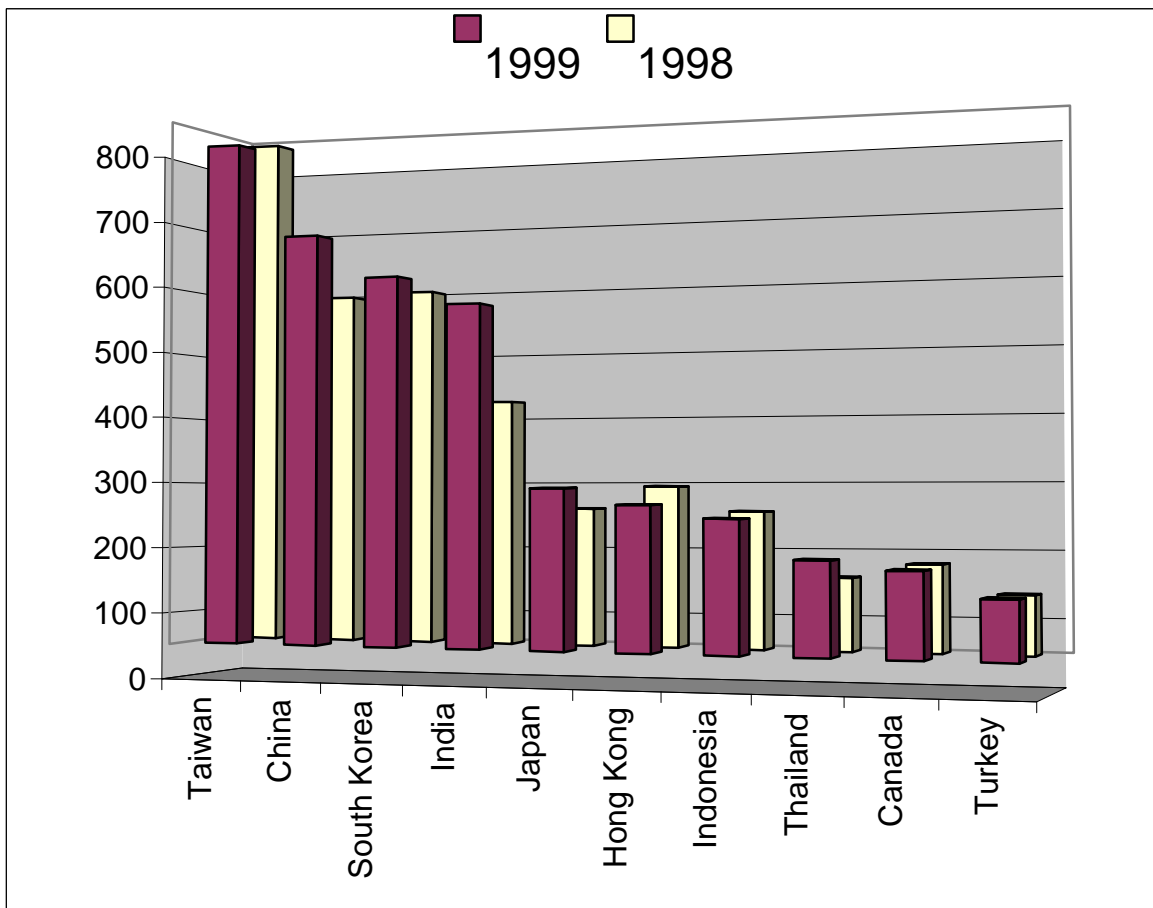
**TOP TEN COUNTRIES WITH NEW INTERNATIONAL STUDENT ENROLLMENT  
FALL 1999 AND FALL 1998**

<u>1998 Rank</u>	<u>Country</u>	<u>1999</u>	<u>1998</u>	<u>% Change</u>
1	India	235	180	30.56%
2	Taiwan	201	280	-28.21%
3	China	191	214	-10.75%
4	South Korea	156	149	4.70%
5	Japan	74	80	-7.50%
6	Thailand	57	40	42.50%
7	Hong Kong	54	77	-29.87%
8	Canada	47	35	34.29%
9	Indonesia	34	50	-32.00%
10	Pakistan	22	14	57.14%



**TOP TEN COUNTRIES WITH TOTAL\* INTERNATIONAL STUDENT ENROLLMENT  
FALL 1999 AND FALL 1998**

<u>1999 Rank</u>	<u>Country</u>	<u>1999</u>	<u>1998</u>	<u>% Change</u>
1	Taiwan	766	781	-1.92%
2	China	622	536	16.04%
3	South Korea	556	542	2.58%
4	India	513	370	38.65%
5	Japan	239	207	15.46%
6	Hong Kong	215	241	-10.79%
7	Indonesia	196	204	-3.92%
8	Thailand	138	108	27.78%
9	Canada	125	129	-3.10%
10	Turkey	88	87	1.15%



\*New plus Continuing Students

**COUNTRIES WITH MORE THAN 100 STUDENTS ENROLLED FOR FALL 1999**

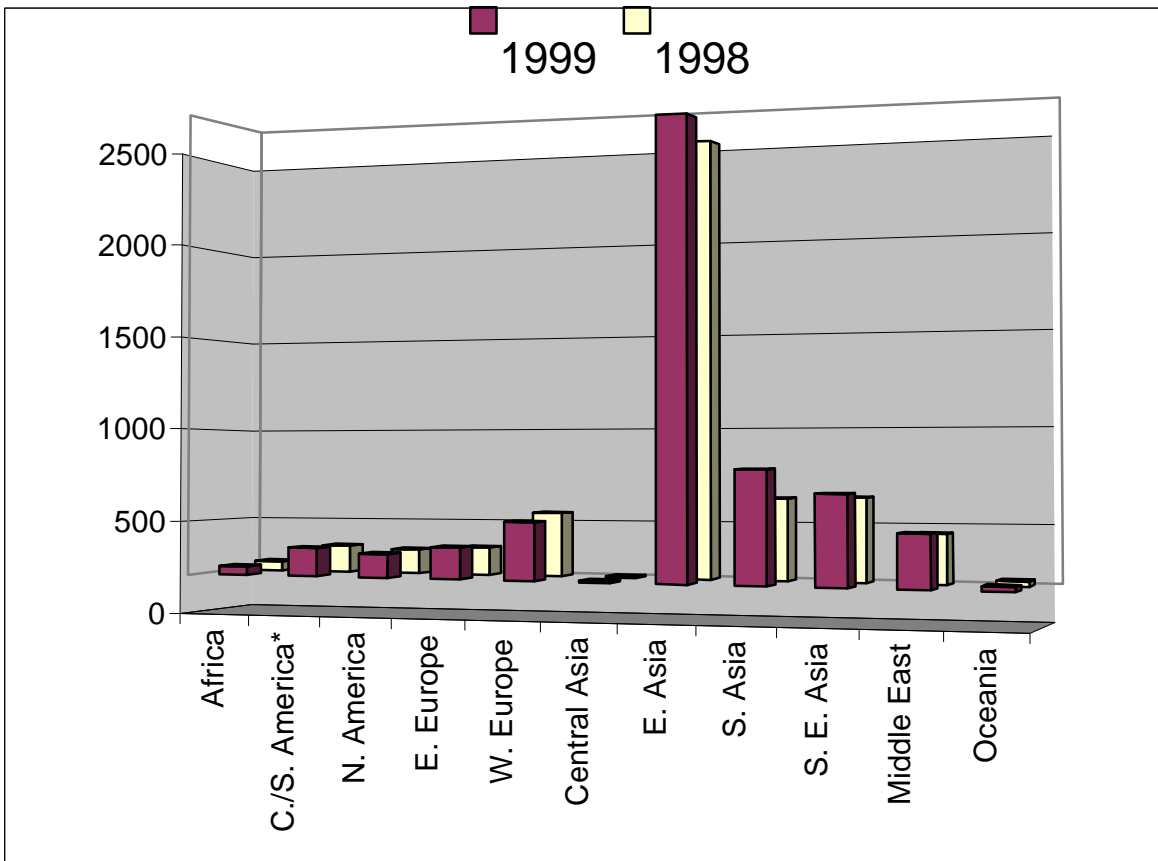
<u>Country</u>	<u>International (Nonimmigrant)</u>	<u>Permanent Resident (Immigrant)</u>	<u>Total</u>
Taiwan	766	290	1056
South Korea	556	301	857
China	622	136	758
India	513	100	613
Hong Kong	215	133	348
Iran	63	219	282
Japan	239	39	278
Indonesia	196	28	224
Canada	125	72	197
Vietnam	2	193	195
Mexico	25	142	167
Thailand	138	25	163
Philippines	28	123	151
United Kingdom	51	63	114
Russia	58	51	109
Sub Total	3597	1915	5512
All Other Countries	967	423	1390
<b>GRAND TOTAL</b>	<b>4564</b>	<b>2338</b>	<b>6902</b>
# Countries	107	117	137
Total USC enrollment	28906	28906	28906
% of Total University Pop. Represented	15.79%	8.09%	23.88%



**INTERNATIONAL STUDENT ENROLLMENT BY WORLD REGION  
FALL 1999 AND FALL 1998**

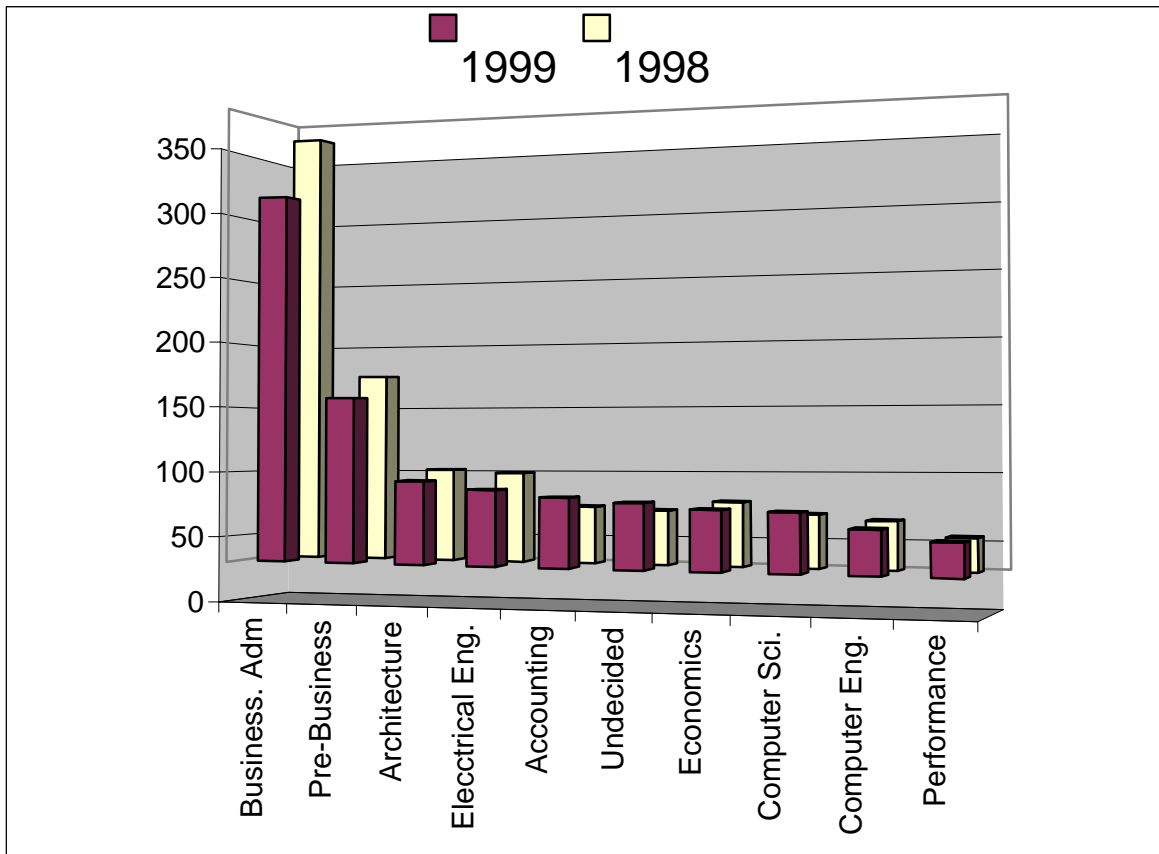
<u>Region</u>	<u>1999 % of Total</u>		<u>1998 % of Total</u>	
Africa	45	0.99%	50	1.17%
C./S. America*	150	3.29%	143	3.34%
N. America	125	2.74%	129	3.02%
E. Europe	167	3.66%	147	3.44%
W. Europe	305	6.68%	339	7.92%
Central Asia	8	0.18%	5	0.12%
E. Asia	2404	52.67%	2312	54.04%
S. Asia	589	12.91%	430	10.05%
S. E. Asia	469	10.28%	439	10.26%
Middle East	276	6.05%	258	6.03%
Oceania	26	0.57%	26	0.61%
<b>TOTAL</b>	<b>4564</b>	<b>100.00%</b>	<b>4278</b>	<b>100.00%</b>

\* Includes Mexico



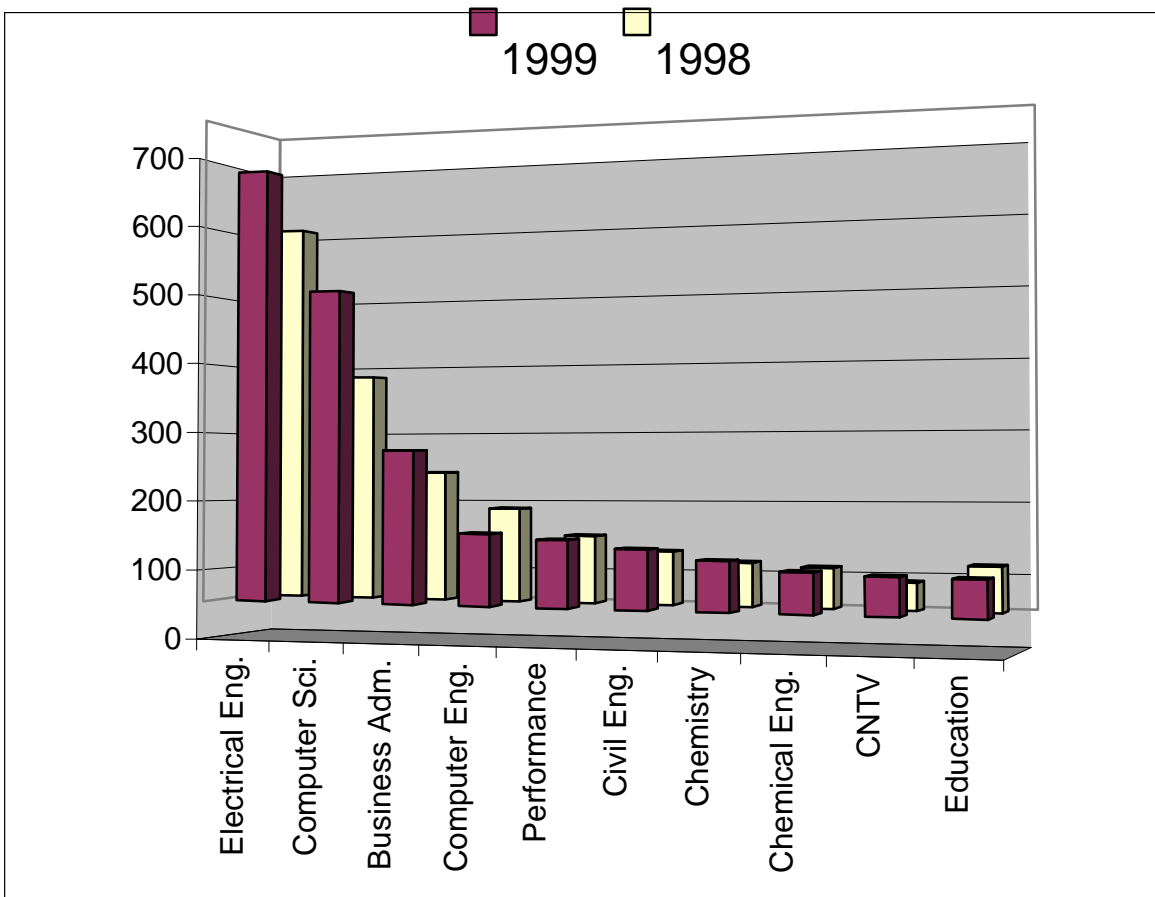
**TOP TEN MAJORS OF INTERNATIONAL UNDERGRADUATE STUDENTS  
FALL 1999 AND FALL 1998**

<u>Rank</u>	<u>Major</u>	<u>1999</u>	<u>1998</u>	<u>% Change</u>
1	Business Administration	282	333	-15.32%
2	Pre-Business	126	143	-11.89%
3	Architecture	63	70	-10.00%
4	Electrical Engineering	57	68	-16.18%
5	Accounting	52	43	20.93%
6	Undecided (College of Letter, Arts and Sciences)	49	41	19.51%
7	Economics	45	48	-6.25%
8	Computer Science	44	40	10.00%
9	Computer Engineering	33	36	-8.33%
10	Music Performance	25	25	0.00%



**TOP TEN MAJORS OF INTERNATIONAL GRADUATE STUDENTS  
FALL 1999 AND FALL 1998**

<b>Rank</b>	<b>Major</b>	<b>1999</b>	<b>1998</b>	<b>% Change</b>
1	Electrical Engineering	626	549	14.03%
2	Computer Science	449	327	37.31%
3	Business Administration	219	186	17.74%
4	Computer Engineering	102	134	-23.88%
5	Music Performance	95	96	-1.04%
6	Civil Engineering	84	76	10.53%
7	Chemistry	70	62	12.90%
8	Chemical Engineering	57	57	0.00%
9	Cinema Television	53	39	35.90%
10	Education	52	63	-17.46%



**FALL 1999 INTERNATIONAL\* STUDENT ENROLLMENT BY COUNTRY**

<u>Country</u>	<u>Region</u>	<u>Undergraduate</u>	<u>Graduate</u>	<u>Other</u>	<u>Total</u>
Albania	E. Europe		1		1
Algeria	Africa	1			1
Argentina	S. America	6	14	1	21
Armenia	E. Europe		5	2	7
Australia	Oceania	7	6	4	17
Austria	W. Europe	5	4	2	11
Bangladesh	S. Asia		13	1	14
Belarus	E. Europe		1		1
Belgium	W. Europe	3	4		7
Belize	C. America	1	1		2
Bolivia	S. America	1	2		3
Botswana	Africa	4			4
Brazil	S. America	15	27	2	44
Brunei	S. E. Asia	1			1
Bulgaria	E. Europe	3	13		16
Burkina Faso	Africa		1		1
Burma	S. E. Asia	3	1		4
Canada	N. America	47	69	9	125
Chile	S. America	2	4	2	8
China	E. Asia	41	546	35	622
Colombia	S. America	1	11		12
Congo (Kinshasa)	Africa	1			1
Costa Rica	C. America	1	1	1	3
Croatia	E. Europe	2	2	1	5
Cyprus	Middle East	3	8		11
Czech Republic	E. Europe	3	4		7
Denmark	W. Europe		4	3	7
Ecuador	S. America	2	1		3
Egypt	Africa	2	6		8
Finland	W. Europe	1	2		3
France	W. Europe	17	18	7	42
Germany	W. Europe	16	27	2	45
Ghana	Africa		2		2
Greece	W. Europe	2	26		28
Guatemala	C. America	1			1
Hong Kong **	E. Asia	151	59	5	215
Hungary	E. Europe	7	3	3	13
Iceland	W. Europe		1	1	2
India	S. Asia	31	480	2	513
Indonesia	S. E. Asia	94	66	36	196

**FALL 1999 INTERNATIONAL \* STUDENT ENROLLMENT BY COUNTRY**

<u>Country</u>	<u>Region</u>	<u>Undergraduate</u>	<u>Graduate</u>	<u>Other</u>	<u>Total</u>
Iran	Middle East	3	57	3	63
Ireland	W. Europe		6	1	7
Israel	Middle East	3	12	2	17
Italy	W. Europe	6	14	6	26
Jamaica	C. America		2		2
Japan	E. Asia	82	125	32	239
Jordan	Middle East	1	3	1	5
Kazakstan	C. Asia	1	3		4
Kenya	Africa	1	2		3
Kuwait	Middle East	7	13	2	22
Kyrgyzstan	C. Asia	1			1
Latvia	E. Europe	1			1
Lebanon	Middle East	5	9		14
Lithuania	E. Europe		3		3
Macau	E. Asia	5	1		6
Macedonia ***	E. Europe		1		1
Malawi	Africa		1		1
Malaysia	S. E. Asia	32	12	1	45
Mauritius	Africa		1		1
Mexico	C. America	4	18	3	25
Moldova	E. Europe		1	1	2
Mongolia	C. Asia			1	1
Morocco	Africa		5		5
Nepal	S. Asia		3		3
Netherlands	W. Europe		4		4
New Zealand	Oceania	2	7		9
Nigeria	Africa	5			5
Norway	W. Europe	2	4		6
Oman	Middle East	2			2
Pakistan	S. Asia	15	37		52
Paraguay	S. America	3			3
Peru	S. America		8		8
Philippines	S. E. Asia	12	16		28
Poland	E. Europe	7	4	2	13
Portugal	W. Europe	1	2		3
Qatar	Middle East	2		6	8
Reunion	Africa		1		1
Romania	E. Europe	1	15	2	18
Russia	E. Europe	3	54	1	58
Saudi Arabia	Middle East	10	18	3	31

**FALL 1999 INTERNATIONAL\* STUDENT ENROLLMENT BY COUNTRY**

<b>Country</b>	<b>Region</b>	<b>Undergraduate</b>	<b>Graduate</b>	<b>Other</b>	<b>Total</b>
Serbia	E. Europe	1	1		2
Singapore	S. E. Asia	28	22	5	55
Slovakia	E. Europe	2			2
Slovenia	E. Europe	1		1	2
South Africa	Africa	3	3		6
South Korea	E. Asia	102	403	51	556
Spain	W. Europe	3	20	7	30
Sri Lanka	S. Asia	3	4		7
Sudan	Africa		1		1
Sweden	W. Europe	8	7	3	18
Switzerland	W. Europe	7	8		15
Syria	Middle East	1	3		4
Taiwan	E. Asia	157	549	60	766
Thailand	S. E. Asia	10	124	4	138
Trinidad and Tobago	C. America	1	1		2
Tunisia	Africa	1	1		2
Turkey	Middle East	18	69	1	88
U.S.S.R. ****	E. Europe		2		2
Ukraine	E. Europe	1	4	1	6
United Arab Emirates	Middle East	6	4	1	11
United Kingdom	W. Europe	18	31	2	51
Uruguay	S. America	2	1		3
Uzbekistan	C. Asia	1		1	2
Venezuela	S. America	2	7	1	10
Vietnam	S. E. Asia	1	1		2
Yugoslavia ****	E. Europe	4	3		7
Zimbabwe	Africa	1	2		3
<b>Grand Total</b>		<b>1074</b>	<b>3166</b>	<b>324</b>	<b>4564</b>

\* International students are non-US citizen students who hold non-immigrant visas. Citizens of other countries who are US permanent residents ("green card holders") are not included.

\*\* Officially a Special Administrative Region of the PRC

\*\*\* Former Yugoslav Republic

\*\*\*\* Citizenship of time at initial enrollment