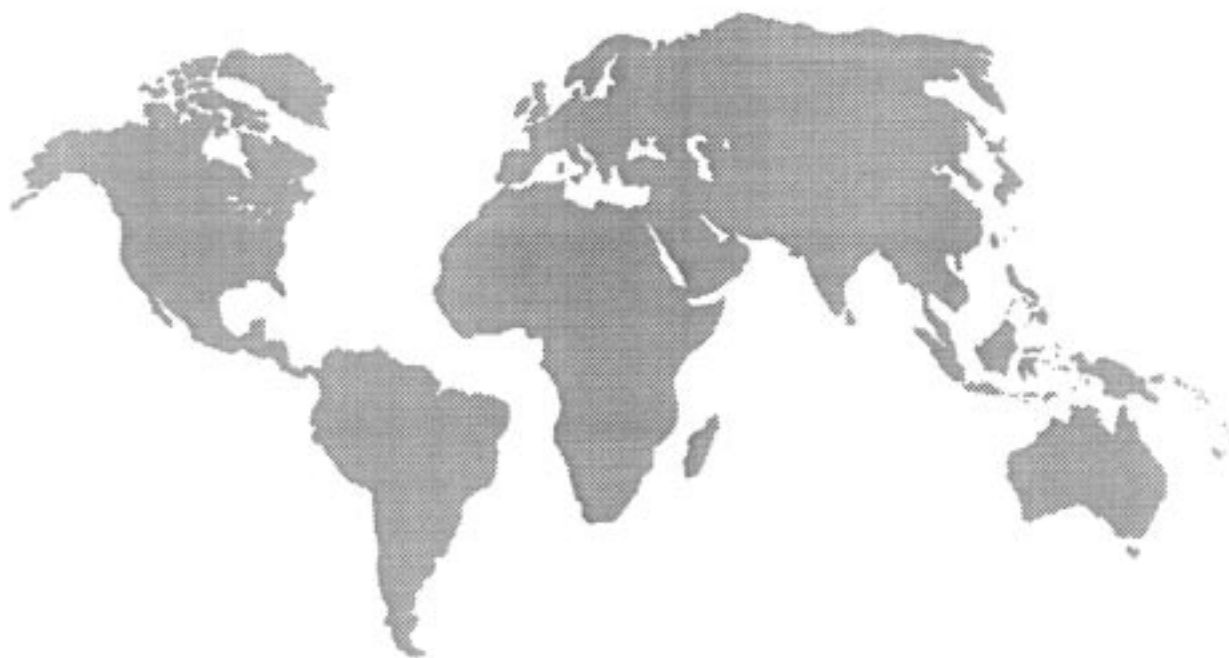




UNIVERSITY OF
SOUTHERN CALIFORNIA

International Student Enrollment Report

Fall Semester 1998



OFFICE OF INTERNATIONAL SERVICES
Division of Student Affairs

TOTAL NUMBER OF INTERNATIONAL* STUDENTS

	<u>1998</u>	<u>1997</u>	<u>% Change</u>
Undergraduate	1166	1256	-7.17%
Graduate	2915	2651	9.96%
Other **	197	127	55.12%
TOTAL	4278	4034	6.05%

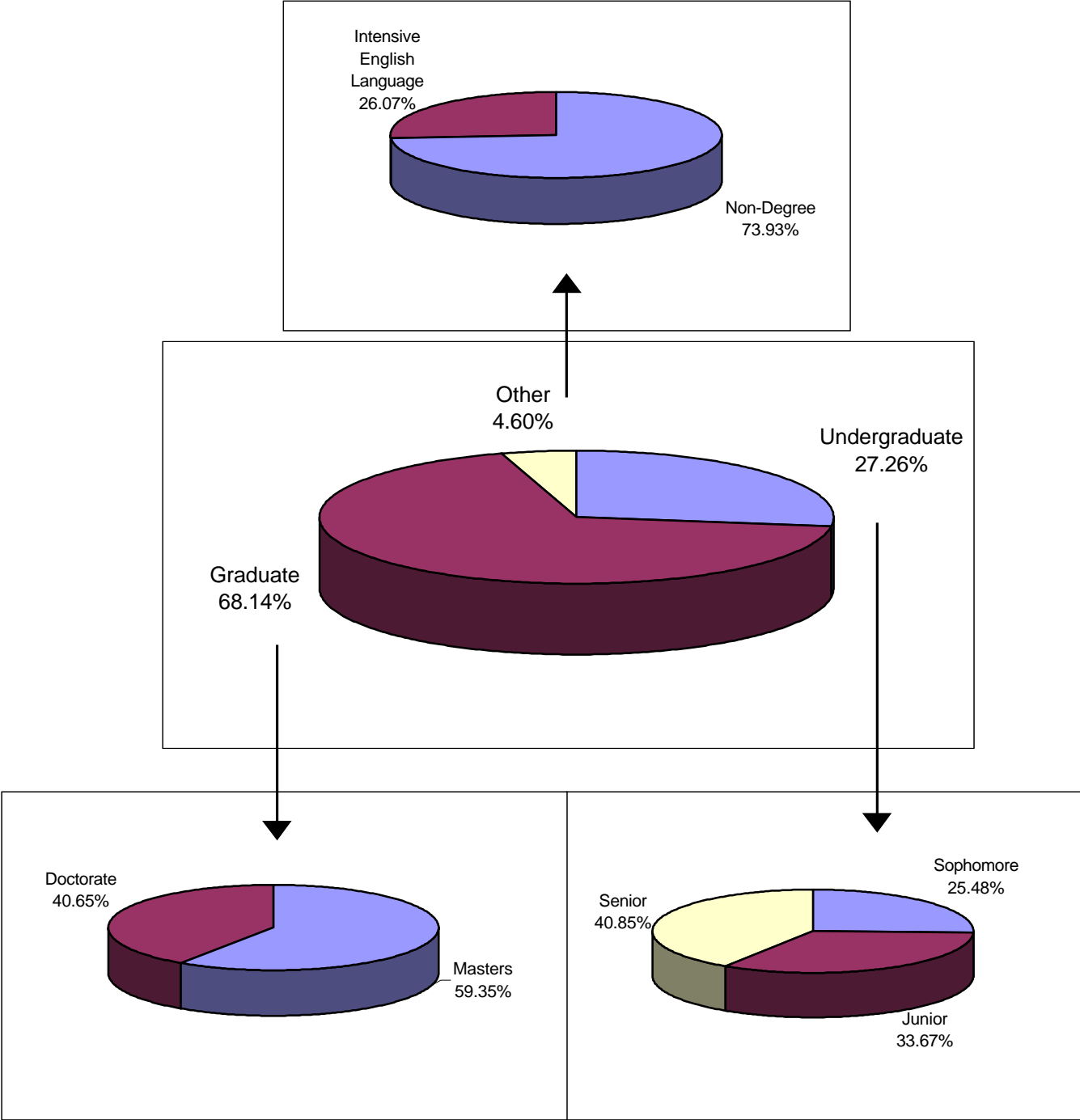
INTERNATIONAL STUDENTS BY ACADEMIC LEVEL

	<u>1998</u>	<u>1997</u>	<u>% Change</u>
Freshmen	177	222	-20.27%
Sophomore	252	285	-11.58%
Junior	333	336	-0.89%
Senior	404	413	-2.18%
Masters	1730	1390	24.46%
Doctorate	1185	1261	-6.03%
Other**	197	127	55.12%

* International Students are non-US citizen students who hold non-immigrant visas. Citizens of other countries who are US permanent residents (green card holders) are not included, see p.8.

** "Other" includes undergraduate and graduate visitors, non-degree program students, USC Language Academy students and those whose degree status is unknown.

CLASS DISTRIBUTION OF INTERNATIONAL STUDENTS, FALL 1998



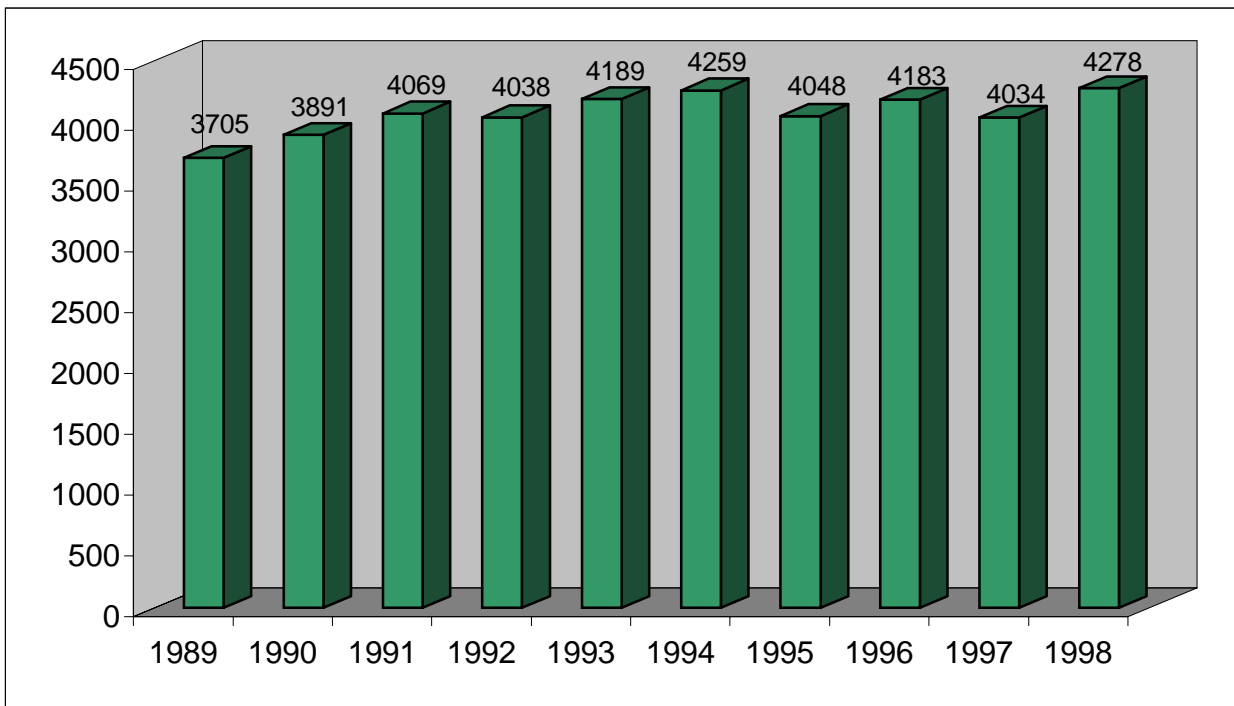
INTERNATIONAL STUDENTS* AS A PERCENTAGE OF TOTAL UNIVERSITY ENROLLMENT - FALL 1998

	<u>International</u>	<u>Total USC</u>	<u>Int'l %</u>
Undergraduate	1166	15736	7.41%
Graduate	2915	11438	25.49%
Other **	197	1279	15.40%
TOTAL	4278	28453	15.04%

* Foreign citizens holding non-immigrant visas

** "Other" includes undergraduate and graduate visitors, non-degree program students, USC Language Academy students and those whose degree status is unknown.

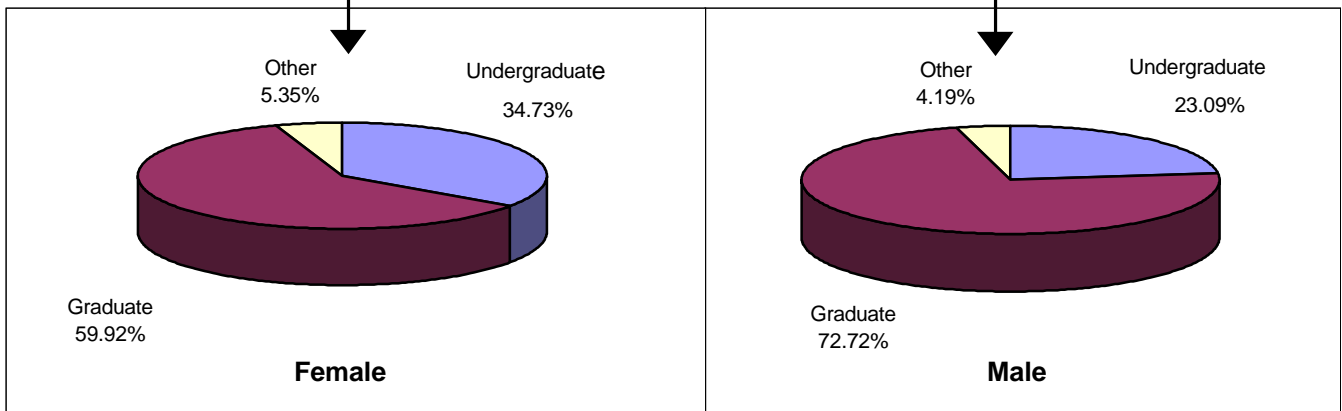
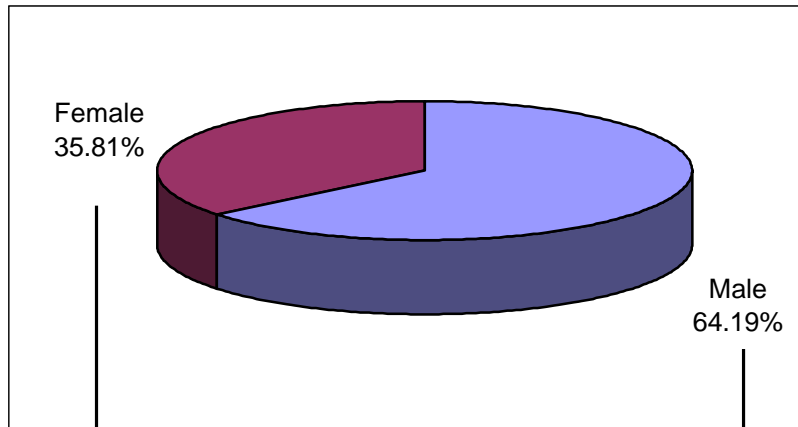
TEN YEARS OF INTERNATIONAL STUDENT ENROLLMENT 1989 - 1998



**GENDER CLASSIFICATION COMPARISON
FALL 1998 AND FALL 1997**

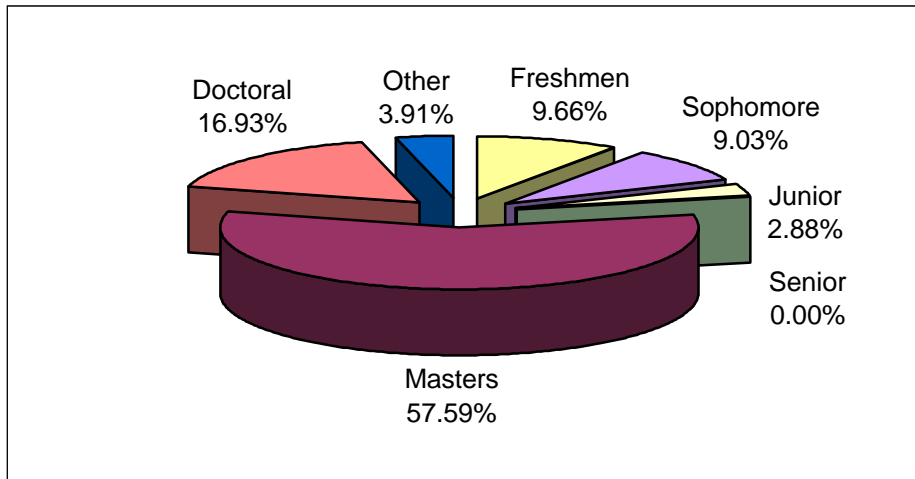
Fall 1998	Male	% of Total	Female	% of Total
Undergraduate	634	54.37%	532	45.63%
Graduate	1997	68.51%	918	31.49%
Other	115	58.38%	82	41.62%
Total Fall 1998	2746	64.19%	1532	35.81%
Total Fall 1997	2548	64.59%	1397	35.41%

**Gender Distribution of International Students
Fall 1998**



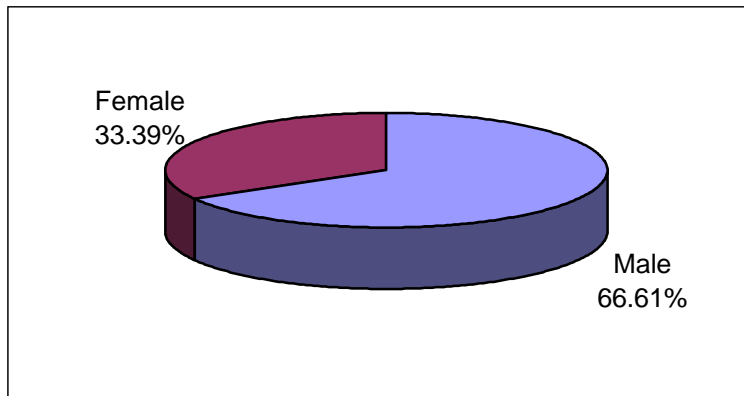
NEW INTERNATIONAL STUDENT ENROLLMENT
FALL 1998

<u>Academic Level</u>	<u>1998</u>	<u>1997</u>
Freshmen	121	144
Sophomore	113	114
Junior	36	25
Senior	0	1
Masters	721	440
Doctoral	212	191
Other	49	61
Total	1252	976



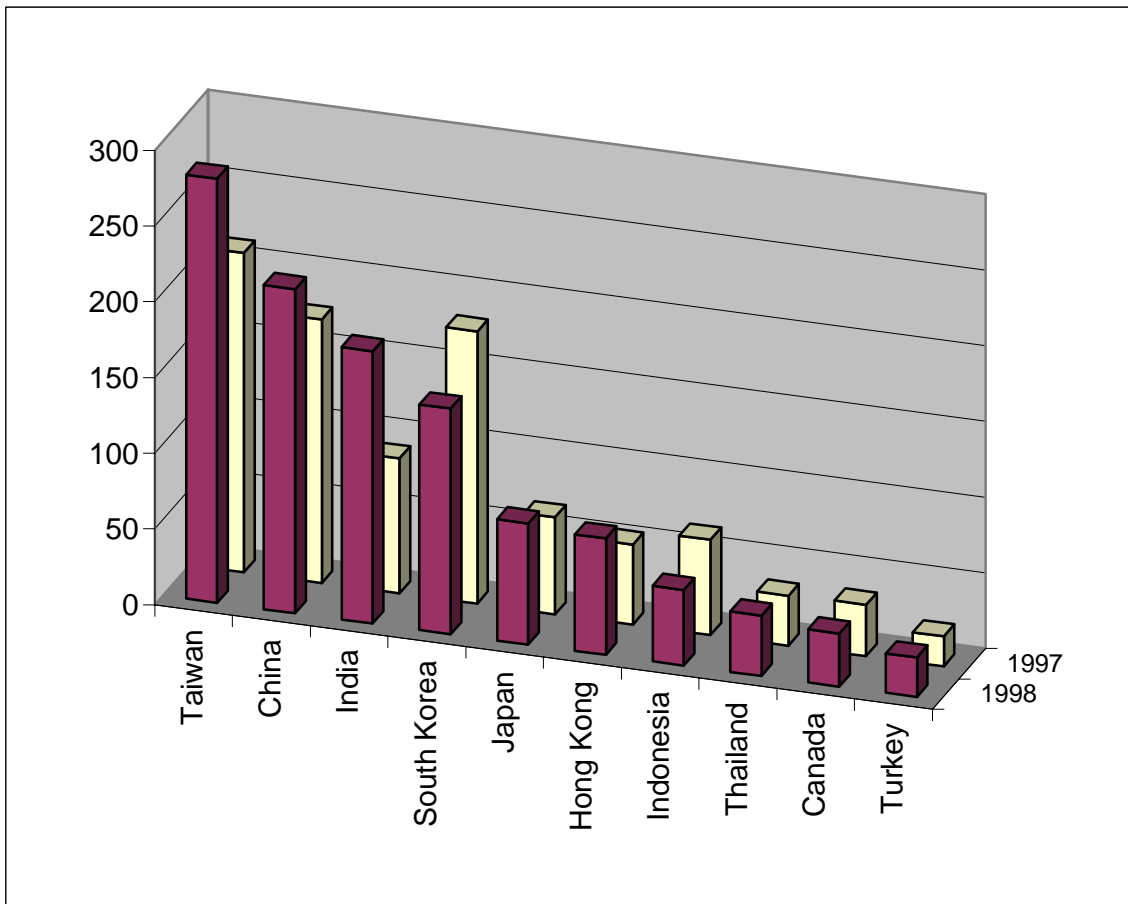
GENDER DISTRIBUTION OF NEW INTERNATIONAL STUDENTS
FALL 1998

Male	834
Female	418



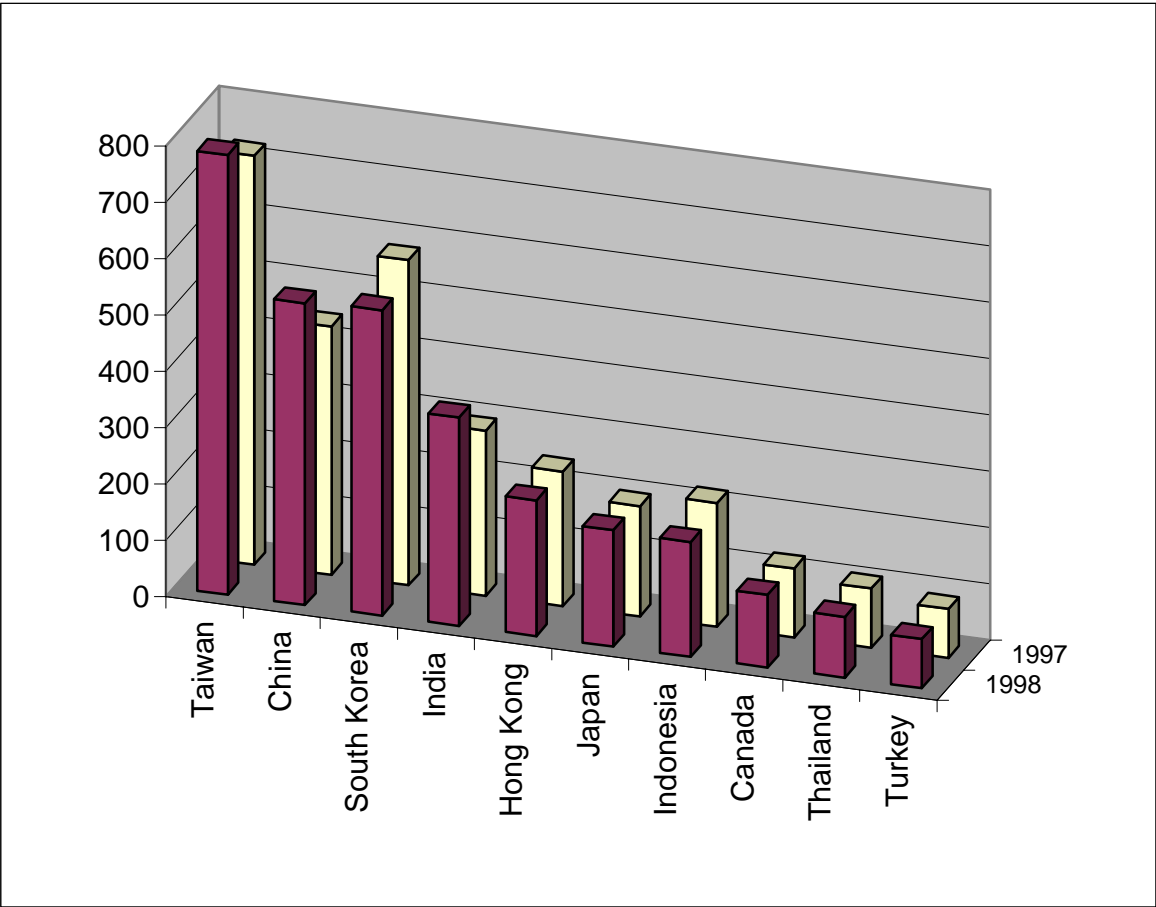
**TOP TEN COUNTRIES WITH NEW INTERNATIONAL STUDENT ENROLLMENT
FALL 1998 AND FALL 1997**

<u>1998 Rank</u>	<u>Country</u>	<u>1998</u>	<u>1997</u>	<u>% Change</u>
1	Taiwan	280	211	32.70%
2	China	214	174	22.99%
3	India	180	89	102.25%
4	South Korea	149	180	-17.22%
5	Japan	80	64	25.00%
6	Hong Kong	77	53	45.28%
7	Indonesia	50	63	-20.63%
8	Thailand	40	33	21.21%
9	Canada	35	34	2.94%
10	Turkey	26	20	30.00%



**TOP TEN COUNTRIES WITH TOTAL* INTERNATIONAL STUDENT ENROLLMENT
FALL 1998 AND FALL 1997**

<u>1998 Rank</u>	<u>Country</u>	<u>1998</u>	<u>1997</u>	<u>% Change</u>
1	Taiwan	781	726	7.58%
2	China	536	441	21.54%
3	South Korea	542	578	-6.23%
4	India	370	293	26.28%
5	Hong Kong	241	239	0.84%
6	Japan	207	196	5.61%
7	Indonesia	204	220	-7.27%
8	Canada	129	122	5.74%
9	Thailand	108	105	2.86%
10	Turkey	87	87	0.00%



*New plus Continuing Students

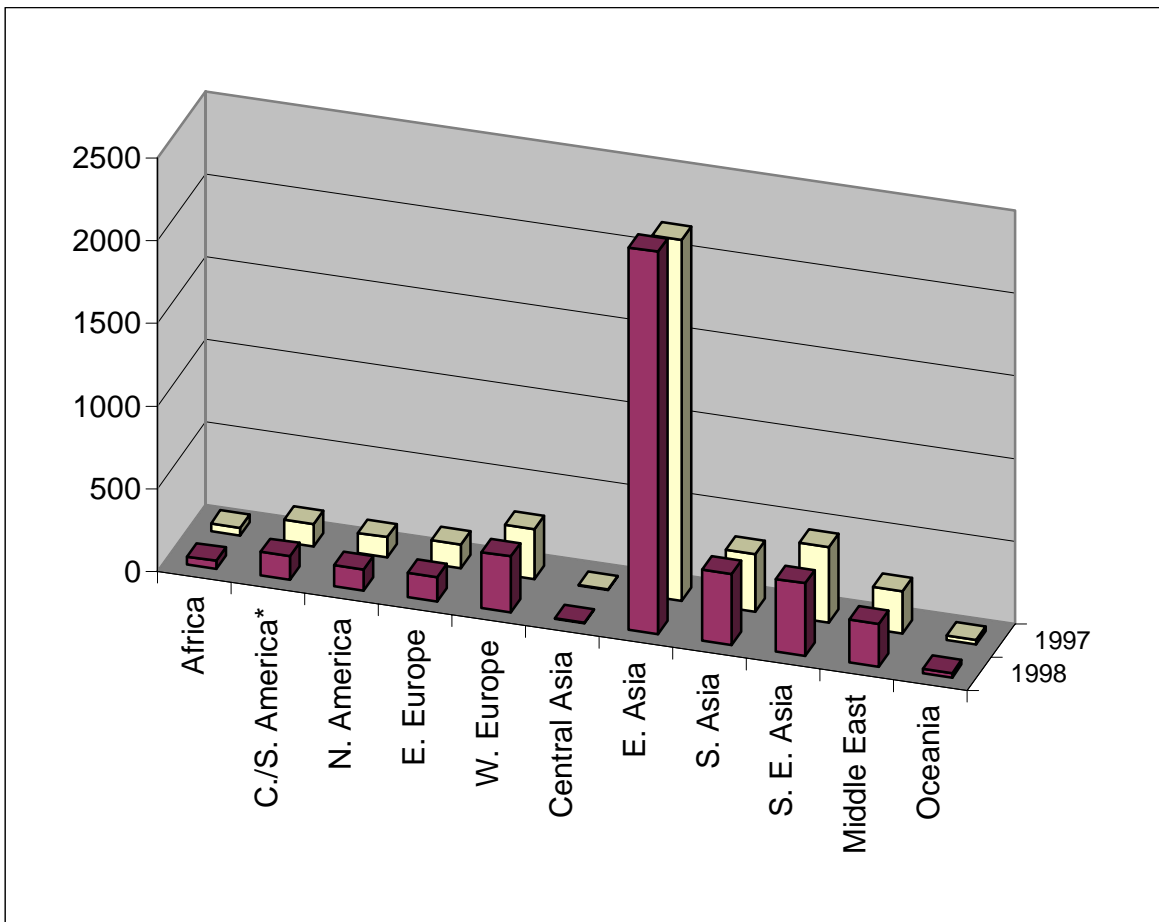
COUNTRIES WITH MORE THAN 100 STUDENTS ENROLLED FOR FALL 1998

<u>Country</u>	<u>International (Nonimmigrant)</u>	<u>Permanent Resident (Immigrant)</u>	<u>Total</u>
Taiwan	781	294	1075
South Korea	542	326	868
China	536	136	672
India	370	82	452
Hong Kong	241	139	380
Iran	55	223	278
Japan	207	42	249
Indonesia	204	31	235
Vietnam	1	214	215
Canada	129	81	210
Mexico	30	155	185
Philippines	26	133	159
United Kingdom	69	89	158
Thailand	108	20	128
Russia	59	53	112
Sub Total	3358	2018	5376
All Other Countries	920	801	1721
GRAND TOTAL	4278	2819	7097
# Countries	106	121	137
Total USC enrollment	28453	28453	28453
% of Total University Pop. Represented	15.04%	9.91%	24.94%

**INTERNATIONAL STUDENT ENROLLMENT BY WORLD REGION
FALL 1998 AND FALL 1997**

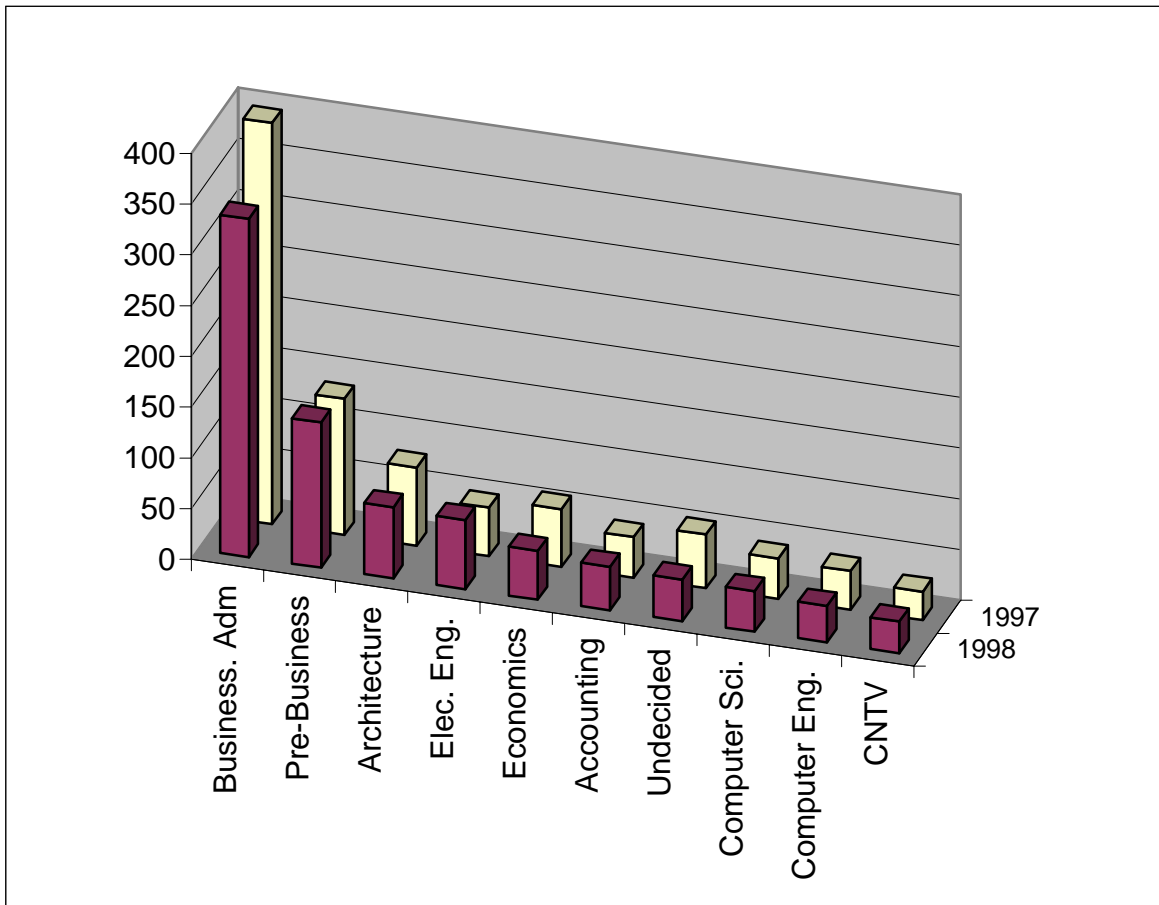
<u>Region</u>	<u>1998 % of Total</u>		<u>1997 % of Total</u>	
Africa	50	1.17%	48	1.19%
C./S. America*	143	3.34%	135	3.36%
N. America	129	3.02%	122	3.03%
E. Europe	147	3.44%	144	3.58%
W. Europe	339	7.92%	301	7.49%
Central Asia	5	0.12%	3	0.07%
E. Asia	2312	54.04%	2183	54.30%
S. Asia	430	10.05%	347	8.63%
S. E. Asia	439	10.26%	455	11.32%
Middle East	258	6.03%	255	6.34%
Oceania	26	0.61%	27	0.67%
TOTAL	4278	100.00%	4020	100.00%

* Includes Mexico



**TOP TEN MAJORS OF INTERNATIONAL UNDERGRADUATE STUDENTS
FALL 1998 AND FALL 1997**

<u>Rank</u>	<u>Major</u>	<u>1998</u>	<u>1997</u>	<u>% Change</u>
1	Business Administration	333	395	-15.70%
2	Pre-Business	143	134	6.72%
3	Architecture	70	77	-9.09%
4	Electrical Engineering	68	48	41.67%
5	Economics	48	57	-15.79%
6	Accounting	43	40	7.50%
7	Undecided (College of Letter, Arts and Sciences)	41	53	-22.64%
8	Computer Science	40	40	0.00%
9	Computer Engineering	36	38	-5.26%
10	Cinema-Television	31	28	10.71%



**TOP TEN MAJORS OF INTERNATIONAL GRADUATE STUDENTS
FALL 1998 AND FALL 1997**

Rank	Major	1998	1997	% Change
1	Electrical Engineering	549	437	25.63%
2	Computer Science	327	204	60.29%
3	Business Administration	186	202	-7.92%
4	Computer Engineering	134	126	6.35%
5	Music Performance	96	*	-
6	Civil Engineering	76	33	130.30%
7	Education	63	67	-5.97%
8	Chemistry	62	42	47.62%
9	Chemical Engineering	57	*	-
10	Economics	56	*	-

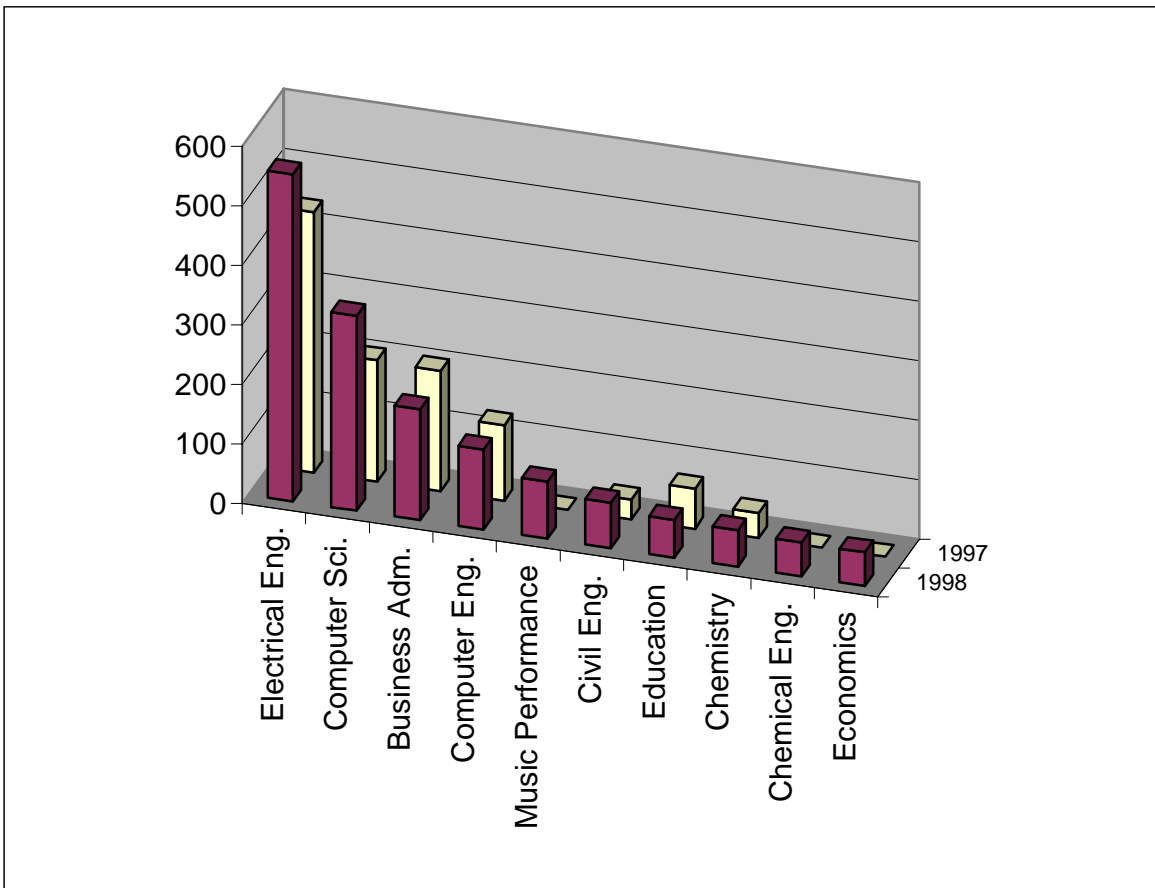
* Number not available

Note: In Fall 1997,

Public Adm. Ranked 6th with 56 students

Planning ranked 7th with 50 students

Cinema Television ranked 9th with 35 students



FALL 1998 INTERNATIONAL* STUDENT ENROLLMENT BY COUNTRY

<u>Country</u>	<u>Region</u>	<u>Undergraduate</u>	<u>Graduate</u>	<u>Other</u>	<u>Total</u>
Argentina	S. America	4	10		14
Armenia	E. Europe		3	2	5
Australia	Oceania	8	6	4	18
Austria	W. Europe	3	2	1	6
Bahamas	C. America			1	1
Bangladesh	S. Asia	1	10	1	12
Belgium	W. Europe	2	4		6
Belize	C. America	1			1
Bolivia	S. America	1	2		3
Botswana	Africa	2			2
Brazil	S. America	10	21	4	35
Brunei	S. E. Asia	1			1
Bulgaria	E. Europe	2	12		14
Burma	S. E. Asia	4			4
Cameroon	Africa		1		1
Canada	N. America	40	82	7	129
Chile	S. America	2	5	1	8
China (PRC)	E. Asia	34	483	19	536
Colombia	S. America	3	14		17
Congo (Kinshasa)	Africa		1		1
Costa Rica	C. America	1	2		3
Croatia	E. Europe	2	2		4
Cyprus	Middle East	3	8		11
Czech Republic	E. Europe	2	1		3
Denmark	W. Europe	4	3	5	12
Ecuador	S. America	2	1		3
Egypt	Africa	3	6		9
Ethiopia	Africa	1			1
Finland	W. Europe	2	1		3
France	W. Europe	13	19	3	35
French Polynesia	Oceania	1			1
Germany	W. Europe	22	32	6	60
Ghana	Africa		2		2
Greece	W. Europe	4	23	1	28
Guatemala	C. America	1			1
Hong Kong **	E. Asia	179	56	6	241
Hungary	E. Europe	4	5	1	10
Iceland	W. Europe		1	1	2

FALL 1998 INTERNATIONAL* STUDENT ENROLLMENT BY COUNTRY

Country	Region	Undergraduate	Graduate	Other	Total
India	S. Asia	20	347	3	370
Indonesia	S. E. Asia	131	71	2	204
Iran	Middle East	6	48	1	55
Ireland	W. Europe		6		6
Israel	Middle East	3	10	1	14
Italy	W. Europe	6	13	5	24
Jamaica	C. America	1			1
Japan	E. Asia	71	120	16	207
Jordan	Middle East		4		4
Kazakstan	C. Asia	2	2		4
Kenya	Africa	2	1		3
Kuwait	Middle East	9	13		22
Latvia	E. Europe	2	1		3
Lebanon	Middle East	3	10		13
Lithuania	E. Europe		3		3
Macau	E. Asia	3	2		5
Malawi	Africa		1		1
Malaysia	S. E. Asia	34	8		42
Mauritius	Africa	2			2
Mexico	C. America	9	19	2	30
Moldova	E. Europe		1	1	2
Morocco	Africa		4		4
Nepal	S. Asia		2		2
Netherlands	W. Europe		7		7
New Zealand	Oceania	1	4	2	7
Nigeria	Africa	4	2		6
Norway	W. Europe	2	6		8
Oman	Middle East	2			2
Pakistan	S. Asia	11	27		38
Paraguay	S. America	4	1		5
Peru	S. America		8	1	9
Philippines	S. E. Asia	13	13		26
Poland	E. Europe	6	3	2	11
Portugal	W. Europe	2	2		4
Qatar	Middle East	1		3	4
Reunion	Africa		1		1
Romania	E. Europe		13	1	14
Russia	E. Europe	4	54	1	59
Saudi Arabia	Middle East	11	13	5	29

FALL 1998 INTERNATIONAL* STUDENT ENROLLMENT BY COUNTRY

Country	Region	Undergraduate	Graduate	Other	Total
Singapore	S. E. Asia	28	20	5	53
Slovakia	E. Europe	2	1		3
Slovenia	E. Europe	2		1	3
South Africa	Africa	4	6		10
South Korea	E. Asia	127	386	29	542
Spain	W. Europe	7	26	3	36
Sri Lanka	S. Asia	3	5		8
Sudan	Africa		1		1
Sweden	W. Europe	7	6	5	18
Switzerland	W. Europe	6	9		15
Syria	Middle East	1	2		3
Taiwan	E. Asia	172	571	38	781
Tanzania	Africa		1		1
Thailand	S. E. Asia	13	95		108
Trinidad and Tobago	C. America	1	1		2
Tunisia	Africa	2	1		3
Turkey	Middle East	20	64	3	87
U.S.S.R. ***	E. Europe		2		2
Ukraine	E. Europe		4		4
United Arab Emirates	Middle East	8	4		12
United Kingdom	W. Europe	29	37	3	69
Uruguay	S. America	1	1		2
Uzbekistan	C. Asia	1			1
Venezuela	S. America		7	1	8
Vietnam	S. E. Asia		1		1
Yemen	Middle East	2			2
Yugoslavia ***	E. Europe	3	4		7
Zimbabwe	Africa		2		2
Grand Total		1166	2915	197	4278

* International students are non-US citizen students who hold non-immigrant visas. Citizens of other countries who are US permanent residents ("green card holders") are not included.

** Officially a Special Administrative Region of the PRC

*** Citizenship of time at initial enrollment

Published by
Office of International Services
Division of Student Affairs

University of Southern California

Student Union 300

Los Angeles, CA 90089 - 0899

MC 0899

(213) 740-2666

<http://www.usc.edu/dept/student-affairs/OIS/>

OIS Staff

Dixon C. Johnson	Executive Director
Nadadur Kumar	Associate Director
Judy Hartwich	Assistant Director
Laurie Cox	International Student Advisor
Tony Tambascia	International Student Advisor
Armineh Abrahamian	Faculty/Staff Visa Specialist
Xin Gong	Immigration Specialist
Sumaiya Mamun	Immigration Specialist
Yelda McMurray	Immigration Specialist
Monique Sosa	Immigration Specialist
Sonia Foon	Office Manager
Pearl Coleman	Information Specialist
Mark Olsen	Publications Editor
Alan Ting	Computer Specialist
Petra Lurie	English Program Coordinator
Polly Chan	Student Project Coordinator/ ASPIRE
Sunny Lie	Student Project Coordinator/ ASPIRE
Rachelle Balinas	Student Assistant
Marion Curry	Student Assistant
Ryan Halfon	Student Assistant
Emily Mauer	Student Assistant
Aubrey Tam	Student Assistant
Charlene Torres	Student Assistant
Serena Young	Student Assistant

International Peer Advocates

(213) 740-5250

Eileen Chan
Taline Ekmekjian
Santiago Kow
Jungmin Lee
Malaika Marable
Tarica Phungprasert